

MPTF | Motion Picture & Television Fund
23388 Mulholland Drive
Woodland Hills, CA 91364
Toll-free | 855.760.MPTF (6783)

Email us at info@mptf.com

Donor Relations | 818.876.1977
Social Services | 323.634.3888
Palliative Care | 818.876.1739
Volunteering | 818.876.1915

mptf.com



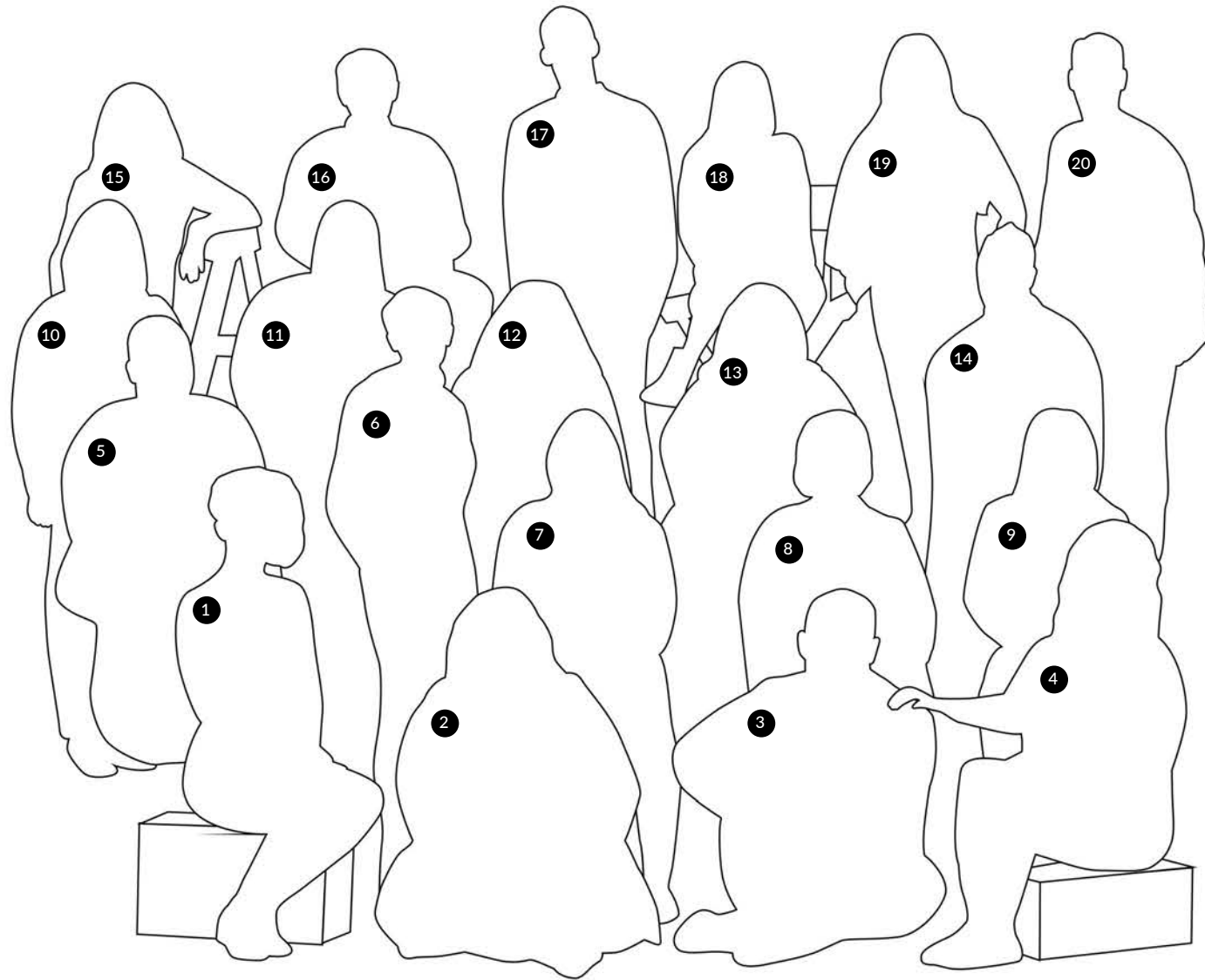
PHOTOS:

Portrait Photography: Fred Siegel
p. 8 - Michael Kovac/Getty Images
p. 21 - Getty Images
p. 22 - Mathew Imaging
p. 23 - Shutterstock, Michael Kovac/Getty Images
p. 26 - Rob LaTour

HERE WHEN YOU NEED US MOST

2023 ANNUAL REPORT





MISSION STATEMENT

MPTF supports our entertainment community in living and aging well, with dignity and purpose, and in helping each other in times of need.

BOARD OF DIRECTORS

Bob Beitcher
 Nicole Clemens
 George Clooney
 Duncan Crabtree-Ireland
 Dr. Eric Esrailian
 Jim Gianopulos
 John Goldwyn
 Russell Hollander
 Michael Karlin
 Hawk Koch
 Jessie Kornberg
 Matthew D. Loeb
 Kevin McCormick
 Henry R. Muñoz III
 Lisa Pierozzi
 Peter Rice
 Maria Rodriguez
 Karen Rosenfelt
 Nina L. Shaw
 Emma Thomas
 Casey Wasserman
 John Wells

BOARD OF GOVERNORS

J.J. Abrams
 Byron Allen
 Betsy Beers
 Greg Berlanti
 Lauren Shuler Donner
 Channing Dungey
 Tony Goldwyn
 Curtis "50 Cent" Jackson
 Christopher Nolan
 Ann Sarnoff

MEMBERS OF MPTF'S SOCIAL SERVICES TEAM

- | | |
|--|--|
| ① Carly Castaneda, LCSW | ⑪ Jenny Lam, MSW |
| ② Vanessa Benitez, MSW | ⑫ Jo G. Obedencio, MSW |
| ③ Ronald Gomez, Veterans Benefits Specialist | ⑬ Christine Haddad, MA |
| ④ Kelly Lopez, MSW | ⑭ Jennifer Jorge, LCSW |
| ⑤ Krystal Moreno Robledo,
Coordinator Community Social Services | ⑮ Jessica Caughey, LCSW |
| ⑥ Odile Swift, MBA | ⑯ Juan Oliva, MFT |
| ⑦ Wendy Garfinkel, LCSW | ⑰ Jirair Abassian, LCSW |
| ⑧ Renee Gates, LCSW, CSW-G | ⑱ Jacqueline Ascenzi, MSW |
| ⑨ Rachel Reiff, LCSW, CSW-G, ACHP-SW | ⑲ Tiffany Lawrence, MSW |
| ⑩ Maria Gisina, LCSW | ⑳ Geoffrey Ravenscroft, Sr ETO Analyst |

NOT PICTURED:

- | | |
|--|--|
| Allisa Daquino, LCSW | Alyssa Ramirez, LCSW |
| Anne Front, LMFT, APHSW-C | Naomi Rodda, MSW, LCSW |
| Lorna Kahn, MSW | Meagan Yap, Social Services Administrative Assistant |
| Sahmia Mitchell, Community Social Services Coordinator | |



Bob Beitcher, MPTF President and CEO

TEAMWORK IN ACTION

Another year, another crisis. If it weren't so stressful, I suppose it could be called stranger than fiction. But that's the way our industry is rolling for now, "from pillar to post" some may say, so all MPTF can do is roll with it and continue to fasten our attention on the main prize of taking care of our own.

We did this in 2023 with an awe-inspiring effort from our Social Services team, appropriately featured on the cover of this year's annual report, in supporting our entertainment workforce in their time of need not only with financial assistance but also with care, compassion, and life management guidance that helped them get through the months-long work stoppages. The statistics are overwhelming, but what matters even more to us, and to those we help, is the nourishing human contact that goes into every personal interaction coming from the MPTF social services staff.

As we have been for the past 100+ years, MPTF is here to step up and step in when called upon and to do it with grace, dignity, and professionalism. We understand the unpredictability of working in our industry and the critical importance of an organization whose sole purpose is to hold out a hand of support.

My job in all of this is to think about the well-being of our team – after all they are the foundation for everything else – to keep them focused on our core values, and inspire philanthropy in our entertainment community to provide the organization with the resources it needs to be successful.

This annual report celebrates the programs and services MPTF provides to our working and retired industry members, and once again acknowledges the generous corporations and individuals who have made MPTF a giving priority. You are the reason we are able to sustain our safety net of support, and we could not be more grateful.

Bob Beitcher

A handwritten signature in black ink, appearing to read "Bob Beitcher".

THE PARTS WE PLAY

WHAT MEMBERS NEEDED MOST
92% FINANCIAL ASSISTANCE

\$11.2 Million DISTRIBUTED IN 2023
13,863 INDUSTRY MEMBERS RECEIVING MPTF SERVICES
3X INCREASE OVER 2022

COMMUNITY FINANCIAL ASSISTANCE



THE IMPACT OF INDUSTRY STRIKES

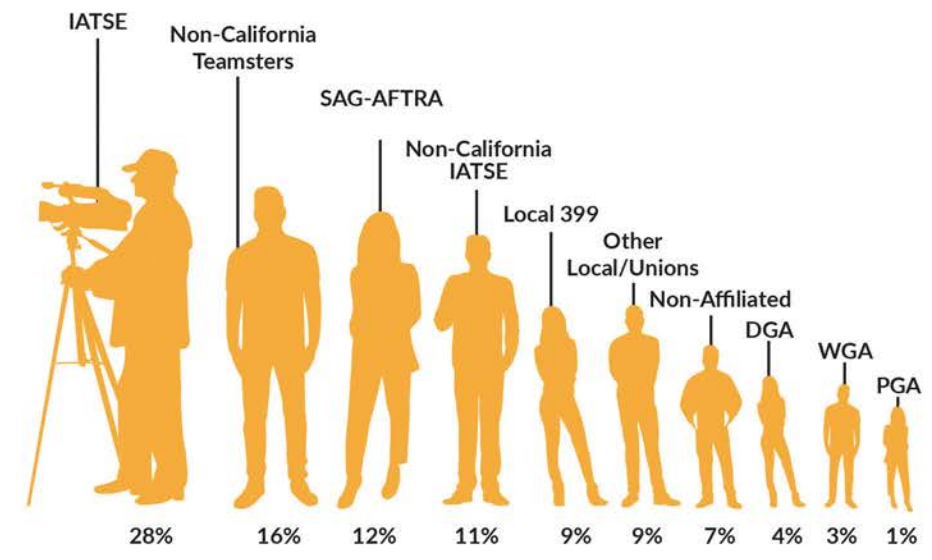
- 13,280** CALLS FROM INDUSTRY MEMBERS AFFECTED
- \$7,700,000** IN FINANCIAL GRANTS DISTRIBUTED*
- 10,173** RECEIVED DEDICATED SERVICES
- 78%** WERE BELOW-THE-LINE CREW
- 4,138** RECIPIENTS OF GRANTS
- 1,523** LOCAL MEMBERS ATTENDED INFORMATION PRESENTATIONS
- 17** EVENTS AT LOCALS, GUILDS AND FAIRS

*FINANCIAL ASSISTANCE PROVIDED BY RELIEF FUNDS BY LOCALS AND VARIOUS FUNDERS TO SOCIAL SERVICES TO ADMINISTER DURING THE STRIKES.

NUMBER OF CLIENTS SERVED PER YEAR



INDUSTRY AFFILIATION



MPTF BY THE NUMBERS

1,407 ELDER CONNECTION 65+ CLIENTS AND FAMILY MEMBERS

5,963 CLIENTS UNDER 65

267 WASSERMAN CAMPUS RESIDENTS

205 RECIPIENTS DAILY CALL SHEET

187 PATIENTS SAMUEL GOLDWYN, JR. CENTER FOR BEHAVIORAL HEALTH

PALLIATIVE CARE

712 PATIENTS & FAMILIES

414 FAMILIES & CAREGIVERS RECEIVING SUPPORT

298 PATIENTS SAMUEL GOLDWYN, JR. CHILDREN'S CENTER

109 CHILDREN ENROLLED

8 FAMILIES SUBSIDIZED

VOLUNTEER PROGRAMS

INTERGENERATIONAL PROGRAMS SERVING CAMPUS AND COMMUNITY INDUSTRY MEMBERS



\$1,655,133 SOCIAL VALUE OF VOLUNTEERS

VETERAN BENEFITS

763 VETERANS/SPOUSES SCREENED

\$302,135 RETROACTIVE BENEFITS RECEIVED

\$37,766 IN ONGOING MONTHLY BENEFITS

ANSWERING CALLS FOR HELP

In 2023, the entertainment industry faced a challenge not experienced since 1960: a dual strike, with the WGA out for 148 days and SAG-AFTRA for 118 days. Production work came to a grinding halt immediately, creating hardships for everyone in the industry, including tens of thousands of crew members. Rent, mortgages, education costs, car payments, health insurance, and medical expenses became major financial obstacles, and MPTF's Social Services team stepped in to offer relief and resources. The demand quickly escalated even beyond that seen during the height of the pandemic; as **Jennifer Jorge, LCSW**, MPTF Director of Community Social Services put it, "People have not rebounded. All those COVID protections that were in place got taken away at the same time. People were finding themselves in a desperate situation."

"In our 102-year history, this has been the largest surge that MPTF has ever experienced in terms of the amount of people that we're helping," said **Courteney Bailey**, MPTF's Chief Development Officer. "When someone calls, we really treat the whole person. We try to see if there are any red flags about mental and physical health, if there are any additional social services that we can also provide."

A major food drive was held on the MPTF Wasserman campus on August 24, with volunteer crew members distributing food and household care items to over 1,000 industry workers and their families driving through campus. The day was the combined effort of IATSE, **Teamsters Local 399**, **MPTF**, **Labor Community Services**, the **Los Angeles Regional Food Bank**, and **Matthew 25 Ministries**. MPTF also teamed up with North Hollywood prop house **History for Hire** and owner **Pam Elyea** to help the out-of-work community, with Jorge appearing at a July 22 prop yard sale held by the **Set Decorators Society of America**. On August 26, Jennifer and Pam were at the Los Angeles County Department of Economic Opportunity's LA County Resource Fair presented with the **LA County Film Office**, with over 20 county divisions helping people find jobs, mental health, EDD, and business loans.

On November 14, MPTF launched its "Back to Work" fundraising campaign with contributors including filmmakers **Denis Villeneuve** and MPTF Board Members **Christopher Nolan** and **Emma Thomas** to support workers facing financial hardship after being out of work. "Our crews will continue to struggle for many months to come," explained MPTF CEO **Bob Beitcher**. "The financial and emotional pain will not be flipped off like a light switch once the strikes end but will require months or longer to heal."

To find out more about services offered by MPTF in times of need, visit mptf.com/services



Annette Greene,
Director, Entertainment Health Insurance Solutions,
whose team works closely with social services to assist clients with health insurance options



Joel and Danielle Aiello

FACING THE UNEXPECTED

Joel and Danielle Aiello first met in Manhattan Beach in 2011 and married soon after. A prop maker in Hollywood for years and an honoree of the Television Academy, Joel worked on everything from *The Mandalorian* to making the legendary bunkbeds in *Step Brothers*. During the pandemic, he tested positive for COVID at the studio during weekly testing, and soon after suffered a massive stroke, which led to a 50-day stay in the ICU. Danielle was confronted with a seemingly insurmountable wall of challenges that led her to reach out to MPTF for help. She later recalled, “We needed to fill out paperwork for short-term disability, long-term disability, his pension, all these benefits, the bank of hours, and all these things I didn’t know anything about.”

“MPTF was founded on the principles of social work,” says their MPTF social worker, **Naomi Rodda, MSW, LCSW**, Director, Home & Community Based Services, “of being there for people in their darkest of times. We’re there to catch the industry when larger systems fail.” Naomi worked closely with Danielle to sort through what needed to be done, observing, “The marriage vows of in sickness and in health, there isn’t a more amazing testament than their relationship. But this would be overwhelming for even the strongest, most resilient person, and I really was a sounding board for her.”

Danielle, in turn, found that the process of pushing to get the benefits issues resolved with MPTF having her back was “like a friend that I could count on, that I could turn to, that was helping me know what I needed to ask, what I needed to do.” As Naomi puts it, “With Joel and Danielle it really wasn’t about writing a check; it was about advocacy. It was about pushing forward to get their disability benefits resolved, so that they had money to pay their bills while Joel was recuperating.” After working together so closely through this crisis, Joel, Danielle, and Naomi finally met face-to-face at our 2023 live telethon on KTLA. Not only was it a chance to finally share a big hug, it was an emotional moment in a long journey that proved the resilience of people who are there for each other.

As we all know, life can throw you unexpected curveballs at any time, and Joel and Danielle appreciate every minute they have together even more. “Joel survived something life-changing,” Danielle says. “They didn’t think he would walk out of there. He did, and we’re going to count our blessings.”

A FRIENDLY VOICE

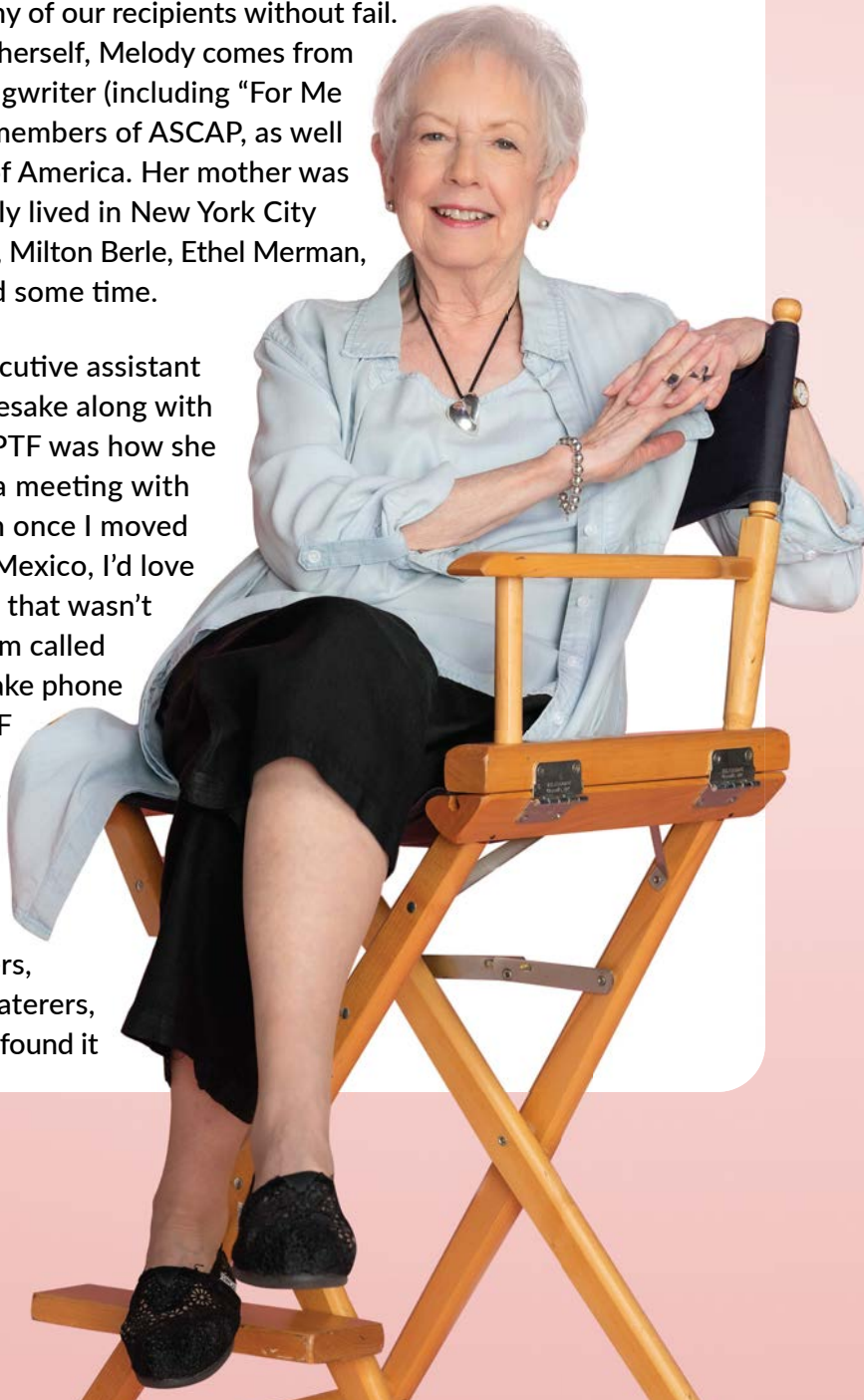
MPTF has been at the forefront of combating social isolation for the past 7 years with our nationally recognized **Daily Call Sheet** program, connecting entertainment industry volunteers with others in our community, a two-way relationship that benefits everyone. It's a fun way for volunteers to make calls and help others from anywhere – home, work, even their car – and to connect with someone with shared experiences and interests.

One longtime Daily Call Sheet volunteer is **Melody Sherwood**, who's been involved since the program's start in 2017 and calls on many of our recipients without fail.

Excited about moving onto our campus herself, Melody comes from an industry family; her father was a songwriter (including "For Me and My Gal") and one of the founding members of ASCAP, as well as a founder of the Songwriters Guild of America. Her mother was a tap dancer in vaudeville, and the family lived in New York City where people like Oscar Hammerstein II, Milton Berle, Ethel Merman, and Cole Porter would stop by to spend some time.

For almost 30 years, she worked as executive assistant for Lew Wasserman (our campus's namesake along with his wife Edie), and Lew's passion for MPTF was how she first heard of us. "I happened to be in a meeting with Bob Beitcher," she recalls, "and told him once I moved back to California from Santa Fe, New Mexico, I'd love to volunteer at the campus. He told me that wasn't necessary, that there was a new program called the Daily Call Sheet where you could make phone calls to people. I spent many hours at MPTF visiting my mother and got to know the campus well, and it's a marvelous place."

Melody is in touch regularly with 11 people (!!) through Daily Call Sheet, spending hours talking "to actors, writers, producers, prop department workers, caterers, transportation. It's eye-opening, and I've found it



really interesting. It's a fabulous way to give back and bring happiness to other people and to yourself." **Maureen Feldman**, who heads the program here at MPTF, calls Melody "one of my rockstar callers. She figured out how to make it pleasant and fun, and she can talk to anybody."

Sometimes the impact of making a connection can be profound and even life-changing, as in the case of **Dave and Nancy Babcock**. A longtime writer-producer, Dave suffered a devastating carotid dissection, a kind of a stroke, in September of 2018 while writing a TV show called *In the Dark*. He spent three weeks in the ICU, followed by three months in neuro rehab and a return home in December. Unable to speak, read, or write and paralyzed on the right side of his body, he learned to walk with the use of an ankle foot orthotic device, and thanks to thousands of hours of speech, physical, and occupational therapy, he can now speak and participate in basic activities of daily living. Looking for outpatient resources that might help, Nancy reached out to Maureen about Daily Call Sheet and ended up connecting Dave with a volunteer, Renee, for weekly Zoom calls. "She jumped in with an open heart and unbelievable willingness to try to understand a perfect stranger," Nancy says, "Renee is a marvel of patience, curiosity, determination, and courage. I can't overestimate how much this program means to Dave and how much he appreciates this time with Renee."



If you would like more information or know someone who would like to stay connected, give us a call at (818) 876-1190.

TIME TO CELEBRATE

MPTF's mission of taking care of our own means treating each other with dignity, empathy and understanding. While our Activities and Recreation Department has long held celebrations of holidays for our residents, and our Spiritual Care department has offered observances of religious traditions, just recently they began collaborating on a program that marks time in new and joyful ways. The **Celebrations of Culture** series offers opportunities for lifelong learning and recognizes that our campus, staff, and the industry at large are increasingly more diverse across race, religion, and culture. We continue to provide opportunities for ritual practices and worship, but we're also fostering more cultural exchange to grow, enjoy, and feel a sense of community and neighborhood.

Among our celebrations in 2023 was a program for National Arab American Heritage Month in April. Led by an Arab-American employee and her sister who shared family heirlooms, they held an Arab folk dance and offered insights into the community's role in America's arts, sciences, and communal service. A Buddha Day gathering took place with **Venerable Master Shantha Sobhana**, a Buddhist monk, leading meditation and teaching about living in the present moment, while Cinco de Mayo featured a festive staff talent show. In June, we marked Juneteenth with education and reflection about Black American history, art, and culture. And our colorful, highly attended, and lively Pride Parade took place on June 28. Our Hospitality Services and Dietary Departments also got more heavily involved, designing special menus so everyone could get a taste of different countries and cultures.

July and August saw staff from Nursing, Transportation, and other departments taking the reins to share beloved customs. Philippines Independence Day was marked with a potluck feast, games, and a singing performance from one of our nurses, a former pageant contestant in the Philippines. El Salvador del Mundo (a.k.a. Las Fiestas Agostinas, "The August Feasts") featured a Salvadoran menu and staff in traditional blue and white dress. On Ukrainian Independence Day, an Activities Department staff member honored the country's traditions and holiday practices with testimony from her nephew, a recent Ukrainian refugee.

November was especially vibrant with dance and attire as **Danza Guadalupana de Nuestra Señora del Valle**, a traditional Aztec dance troupe led by a senior staff leader, **Lorena Soria**, honored deceased loved ones in our community for Día de los Muertos, and as MPTF community member **Monica Sarin** taught Indian dance as visual storytelling for Diwali. Other highlights included Lunar New Year, St. Patrick's Day, Nowruz, Easter, Passover, Eid al-Fitr, Indigenous Peoples' Day, Thanksgiving, Hannukah, Christmas, and many more. These celebrations are open for anyone on campus to learn, grow, and be inspired by this beautiful evolving tapestry at MPTF.

Chaplain Dina Kuperstock from our Spiritual Care Department finds deep meaning in teaming up with colleagues on the program series: "As a chaplain who practices with people of all different spiritual identities, it's easy to observe that a growing part of the American population doesn't closely affiliate with a single religious tradition or institution, though many still find important spiritual meaning in cultural observances. This program is meant to be spiritual care that offers a sense of belonging by celebrating heritage and identity, and through mutuality. It offers a sense of home where all kinds of differences have space and respect."





Alleen Ramrus and Paige Thompson, MPTF Studios Post Production Manager

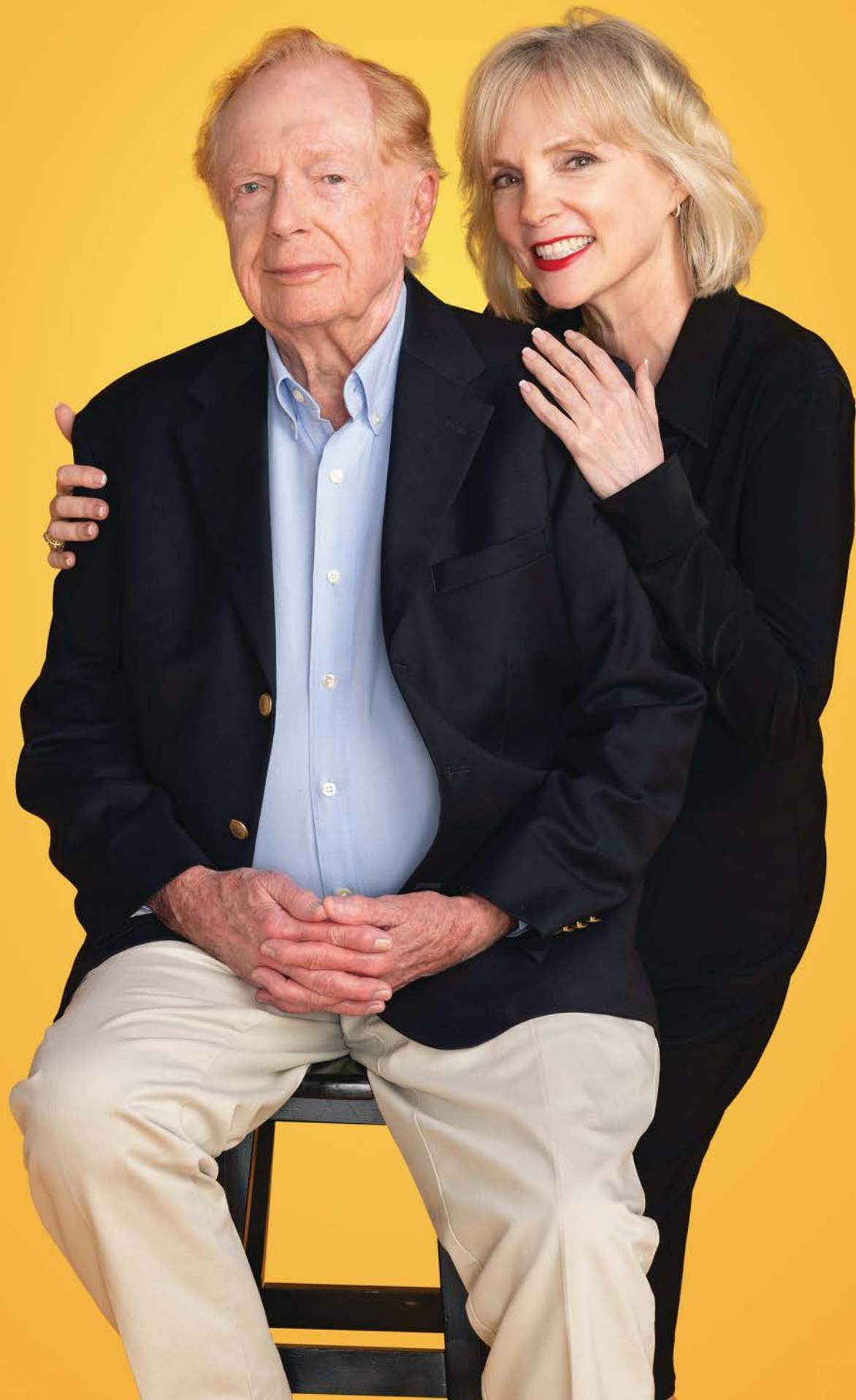
FIND YOUR VOICE

The longtime slogan of MPTF Studios, “Creativity is ageless,” carries many meanings here beyond the film and TV backgrounds of many of our residents and supporters. Artistic inspiration flourishes on our campus and among our community in countless ways, many of them spotlighted on **MPTF Studios’ Creative Chaos**, which celebrated its third year of delivering multiple days of live broadcasted content with shows featuring residents, volunteers, staff, and our other friends from all over the world. Among the participants are actor **Harry Northup** who brings prestigious guests to *Harry’s Poetry Hour*, computer imaging pioneer **Richard Taylor** (who also designs holiday cards for MPTF) and a roster of panelists on *You Be the Critic*, hilarious games of Mafia, **Maggie Abbott** (profiled in our 2021 annual report) with *Maggie Talks!*, deep dives into movie favorites with Cinephiles, **Phil Gittelman** with *The Original Foodie*, **Christina Galante** with *We Are Family* and *Know Your Neighbor*, and **Diana Byrne’s** morning workouts with *Feel the Byrne*, among many others. One Creative Chaos veteran, **Alleen Ramrus**, hosted her show *Everything You Always Wanted To Know About Art* right from her art studio on campus, and the demand led to her switching to in-person art appreciation classes for residents with all of her trademark fascinating and amusing insights. For those off campus, many of these programs are available to view any time on the MPTF and MPTF Studios YouTube channels.

One long-running show on Creative Chaos, *Inside Hollywood* and *Behind the Book*, has been hosted by Board of Directors member **Hawk Koch** with guests in 2023 including Carol Baum, Ed Begley Jr., Jim Mahoney, Fred Spektor, and Jerry Zucker. Hawk also takes part in The Grey Quill Society, our campus writing group, which celebrated its tenth anniversary in 2023 and meets weekly to share work and give birth to new ideas. The meetings are organized and facilitated by volunteer **Victoria Bullock**, a writer whose love for the group grows every year and who is in the process of publishing the fifth volume of Grey Quill writings.

Hawk, Victoria, and **Jennifer Clymer**, Director of MPTF Studios, all joined forces for a unique production on campus on November 18: a live resident reading of Neil Simon’s beloved comedy classic, *The Odd Couple*, with Hawk (a dialogue coach on the original film produced by his father, Howard K. Koch) directing. The idea came when he was attending Grey Quill and thought, “These creative people didn’t have enough to do!” During rehearsal one of the resident performers, Kay Weissman, exclaimed, “This is better than medicine!”

Also better than medicine is the annual **Instant Film Festival** on campus held by the MPTF Studios team, with participants including residents, volunteers, students, and industry pros. Held on April 23, the seventh festival was the first in-person gathering in three years, with over 100 excited participants (including North Hollywood High students, IATSE and New Filmmakers Los Angeles members, and MPTF NextGen and the MPTF Volunteer Guild) coming together as five teams to write, shoot, and edit short films—all in a few hours. As Clymer puts it, “Creativity is the element that connects everyone in our entertainment community. Whether you’re 10 or 100, knowing your voice is heard and respected strengthens your self-worth and brightens your reality. That is our mission every day.”



A FATHER AND DAUGHTER STORY

Our MPTF family is an ever-changing and ever-growing kaleidoscope of those who share in our mission of taking care of our own – residents, staff, volunteers, advocates, and philanthropic supporters, and, of course, the families of our residents. Quite often these are multi-generational as our industry members' children follow them into the business, and just as often family members feel immense gratitude for the care provided by MPTF and put their hands up to help as well.

A resident on our campus for five years now, **Richard M. Learman** held many positions in the entertainment industry for five decades, including Assistant Director. Richard was even part of a film shoot on the Wasserman Campus during his career. However, “Dad” was the most important part of his resume. One of three children with his wife Peggy, his daughter **Kelly Learman Browne**, has been a vital and enthusiastic promoter and volunteer for decades (as has her own daughter), including participating in our annual Instant Film Festival and bonding with the crew at MPTF Studios.

Kelly herself credits MPTF and our social workers with “literally saving my life. My parents were part of the Aliso Canyon gas disaster, the worst one in U.S. history – and MPTF was there for me. **Maria Gisina** was calling me after my mom collapsed, and she and **Holly Spiegel** showed up at my house.” An accomplished and acclaimed author, Kelly has written books including *101 Ways to Create Mindful Forgiveness* and *101 Ways to Say Thank You*. Kelly gave thanks to MPTF in her last two books, which her dad helped on: “He’s my best friend and creative partner.”

“Today my grown-up children know that they can still always come to me for any concerns or feelings they may have, regardless of the circumstances,” Richard says. Being in the industry wasn’t easy working, with 12 to 15-hour days and dealing with the uncertainty of job security after each show, but he brought the kids along for several productions (with acting roles!) including Disney’s *The Last Flight of Noah’s Ark*, Steve McQueen’s last film, *The Hunter*, and parts for all of them in the miniseries *George Washington*.

“What I’m most grateful for at MPTF is the quality of care provided here,” Richard says. “The dining room and kitchen staff, the landscapers, the medical and nursing staff, housekeeping, facilities, security, transportation, gym, recreation, volunteers, social workers, finance and administrative staff – all blend together with unassuming diligence to ensure our comfort and well-being.”

CARING FOR OUR FUTURE

34 years ago, **Samuel Goldwyn Jr.**, his wife **Peggy**, and MPTF board member and industry titan **LeW Wasserman** moved forward with the Samuel Goldwyn Foundation Children's Center in West Los Angeles, for children of industry members aged eight weeks through six years. Sam bought the land and built the center, and it's a very special place! For entertainment industry parents with demanding schedules, Sam G, operated on MPTF's behalf by Bright Horizons, is open from 7:45 a.m. to 6:15 p.m. to meet the entertainment industry's extended work days. Bright Horizon's educational framework at Sam G builds on decades of research and child development finding and philosophies to prepare children for school and life; furthermore, fundraisers provide additional monthly enrichment experiences such as music and dance classes, Spanish immersion, and animal and puppet shows.

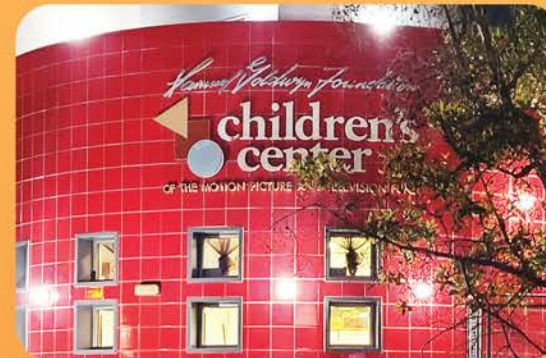
In June, we were thrilled to welcome a new Director of the Children's Center, **Christine Estoque**, who had been with Bright Horizons for the previous 18 months as a Field Director in the L.A. area. With over 25 years' experience in the early childhood field, Christine began her career in the San Diego area, which then took her to Japan working as a director and administrator in early childhood and youth programs for the Department of Defense.

In November, Sam G held a delightful open house for parents and their kids to enjoy time together, including a fun time with lots of animal visitors from **The Little Zoo**. Right after that, from November 13 to December 1, the Children's Center held a festive "Yumraiser" with See's Candies for the holidays to support their ongoing programs.

Actor-director-writer-producer **Reggie Austin** (*Pretty Little Liars*, *Agent Carter*) and producer-production designer-writer **Nicole Diamond Austin** have a ten-year history with the Center with their three children who all attended, and at the end of last year, they made a return visit for a very special reunion. "It's a place very near and dear to our hearts," said Nicole. "The joke we always make is that everything in our lives is in pencil because there are very few constants. I was a very nervous first parent, and I felt like the teachers and staff were partners in our parenting."

Now with the industry still getting back up to speed, the Children's Center has expanded its enrollments on a limited basis to include children outside the entertainment industry and welcomes inquiries about becoming part of this very special family.

"It's a place very near and dear to our hearts."



Christine Estoque, Head of Children's Center.

OUR TRUE FRIENDS

The generosity of our supporters is a key component in sustaining MPTF's mission. **UCLA Health** has understood the important philanthropic role it can play in supporting the many fundraising events MPTF puts on each year, and in 2023 partnered with us on The Night Before, The Evening Before, Day at the Ranch, and our KTLA telethon in which they were featured on-air.

"It's been uniquely gratifying to team up with MPTF on so many events that make a difference in people's lives," said **Johnese Spisso, MPA**, President of UCLA Health, UCLA Hospital System CEO, and Associate Vice Chancellor of UCLA Health Sciences. "Our missions truly intersect with our focus on helping all walks of the industry live with health and dignity, and it's always inspiring to see our sponsorship in action, whether it's helping one person in need or an entire industry-wide crisis. It's a partnership that truly makes us all proud."

A member of the MPTF Board of Directors, **Eric Esrailian, MD, MPH**, is an Emmy®-nominated film producer and an advocate for numerous major global causes, as well as Chief of the Vatche and Tamar Manoukian Division of Digestive Diseases at the David Geffen School of Medicine at UCLA. Eric has been a driving force in the UCLA Health-MPTF relationship for many years, recognizing very early on the positive impact each organization could have on the other. Eric has seen MPTF step in many times over the years for those who need help, including the pandemic and the dual strikes; as he puts it, "MPTF ends up being the organization that people turn to in times of need. It's really important, especially in our Los Angeles community, to explain the role and to champion MPTF as an invaluable resource, which is also so important for our local economy."

Thank you, UCLA Health, for your support and commitment to living well and taking care of our own!

"It's really important, especially in our Los Angeles community, to explain the role and to champion MPTF as an invaluable resource, which is also so important for our local economy."



Dr. Eric Esrailian



UCLA Sponsor Booth at 2024's The Night Before



Matthew Flesock
(Executive Director, UCLA Health Sound Body Sound Mind)



Margueritte Aozasa,
UCLA Bruins Women's Soccer Head Coach,
at MPTF's KTLA telethon.

OUR EVENTS

MPTF's annual events in 2023 were vital in sustaining aid to crew members in need, thanks to the ongoing support and generosity of our corporate sponsors, donors, and advocates. Funds raised were used to support our safety net of health and social services, temporary financial assistance, case management, and residential living. Note that due to the strikes, the annual Evening Before the Emmys® was postponed to early 2024.



Heartbeat of Hollywood Golf Classic

An enthusiastic group of golfers came together for a great cause at the 45th annual Heartbeat Golf event at Moorpark Country Club and North Ranch Country Club culminating with an awards reception, live auction, and raffle at the MPTF campus.

Day at the Ranch

This family-friendly MPTF-IATSE picnic returned to Calamigos Ranch in Malibu, raising funds and providing a sunny day featuring a BBQ lunch buffet, picnic games, a silent auction, raffles, and our first on-site marriage proposal!



The Night Before

In its 21st year, our annual star-studded benefit before the Academy Awards® brought together nominees, presenters, and industry influencers while supporting members of the entertainment community. Co-Chaired by Angela Bassett, Cate Blanchett, George Clooney, and Emma Thomas & Christopher Nolan, the event raised over \$4.5 million.



Lights, Camera, Take Action! Caring for Hollywood's Crews

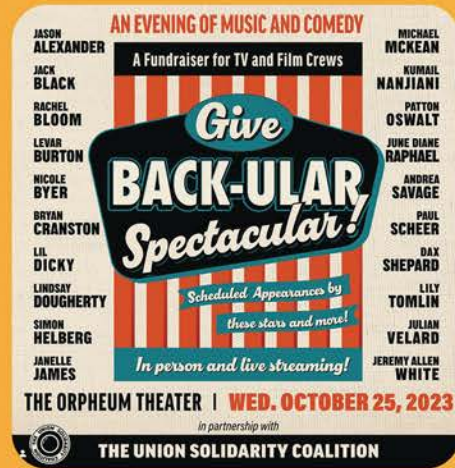
Our second fundraising telethon for crew members in need aired live on KTLA. Yvette Nicole Brown and Tom Bergeron returned as hosts and served as producers along with David Wild and Phil Rosenthal for this uplifting evening. KTLA's Dayna Devon hosted a celebrity lounge where donors could call in, and NextGen's Tiffany Smith ran the tote board for the evening which raised \$786K.

FUNDRAISING GETS CREATIVE

TUSC

During the strikes, TUSC (The Union Solidarity Coalition) was founded by writer-director-actor-producer Lena Dunham, director-screenwriter-author Susanna Fogel, writer-actor-director-comedian Andrea Savage, and actor-comedian-filmmaker-podcaster Paul Scheer. MPTF worked with TUSC to offer direct financial support to crew members who had lost health insurance due to the shutdowns.

Our friends at TUSC started off with a fundraising mixer full of special celebrity guests, which was followed by an August 30 ice cream social on campus, an all-star Give Back-ular Spectacular on October 25 at The Orpheum Theatre, and a Solidarity Night on November 17 in Brooklyn—not to mention an ingenious celebrity auction that immediately went viral. (Who wouldn't want Adam Scott to come walk their dog?)



NEXTGEN

MPTF's advocacy group of young professionals held multiple parties throughout the year, with the biggest being its summer fundraising celebration at NeueHouse Hollywood hosted by Darren Criss complete with a special musical performance.



MPTF AT SKIRBALL

On May 2, The Skirball Center hosted an opening reception benefiting MPTF for its exhibitions, "Blacklist: The Hollywood Red Scare" and "Peter Krasnow: Breathing Joy & Light," featuring a conversation between John Mankiewicz and Ben Mankiewicz.

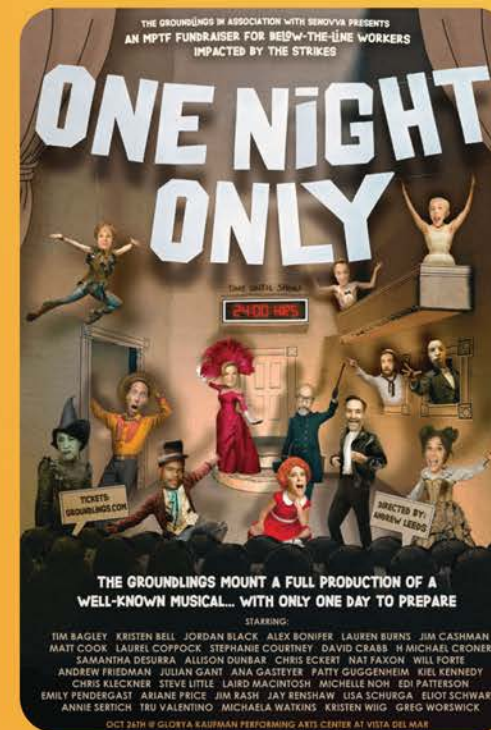
PAN

MPTF's Professional Advisory Network held regular events with special speakers, including a March 30 look at social responsibility within the entertainment industry. Seen here at McDermott Will & Emery are panel moderator Courtney Bailey, and panelists City National Bank EVP Linda Duncombe, and Paramount Pictures SVP Jennifer Lynch.



THE GROUNDINGS

The improv legends delivered a one-of-a-kind fundraiser for below-the-line workers on October 26 with One Night Only, in which a celeb-packed group of improvisers were given only 24 hours to prepare a Broadway musical spectacular. It turned out to be *A Chorus Line*, with hilarious results!



CELEBRITY JEOPARDY

On October 4, actor Brian Baumgartner appeared on *Celebrity Jeopardy* to play for MPTF.

LEGACY OF GIVING

TOTAL GIVING:
\$37,297,190

GIFTS:
31,099

DONORS:
8,586

The support we receive helps keep our mission front and center. This is truly the fabric of the MPTF safety net that safeguards current and retired workers in our industry.

CHAIRMAN'S CIRCLE INDIVIDUAL MEMBERS

Roma Downey and Mark Burnett
George and Amal Clooney
Barry Diller
Susan and Robert Downey, Jr.
Caitlin and Kevin Feige
David Geffen
The Gianopoulos Family
Marilyn and Jeffrey Katzenberg
Kathleen Kennedy and Frank Marshall
Karen Rosenfelt
Patrick Soon-Shiong and Michele B. Chan
Kate Capshaw and Steven Spielberg
Steven E. Tisch
John and Marilyn Wells

CHAIRMAN'S CIRCLE CORPORATE & FOUNDATION MEMBERS

Academy of Motion Picture Arts & Sciences
Amazon MGM Studios
AMC Theatres
Delta Air Lines, Inc.
Directors Guild of America, Inc.
Dolby Laboratories, Inc.
The Douglas Foundation
Gary and Susan Martin Foundation
Google
The Hollywood Reporter
Hollywood Teamsters, Local 399
IATSE International
James and Deborah Burrows Foundation
Johnny Carson Foundation
Katie McGrath and J.J. Abrams Family Foundation
L'Oréal USA
Comcast NBCUniversal
Netflix, Inc.
New Regency Productions, Inc.
NKSFB, LLC
Paramount Global
Penske Media Corporation
PEOPLE Magazine
SAG-AFTRA Producers IACF
The Samuel Goldwyn Foundation
The Semel Charitable Foundation
Sony Pictures Entertainment
The Sumner M. Redstone Charitable Foundation
Target
UCLA Health
Variety
The Walt Disney Company
Warner Bros. Discovery
The Wasserman Foundation

On October 24 on the MPTF campus, our friends, staff, and residents came together to officially open a very special new place: a Memorial Garden in memory of those we loved and lost during the pandemic and honoring our staff who cared for residents and each other. A dedication was held for this beautiful space made possible by the generosity of the Motion Picture Mothers (including two generous contributions from Tom Selleck) and Susan and Gary Martin. It was created and brought to life by our own Michael Spalinger and the incredible landscaping "green team." The day was especially bittersweet since it was mere days before the passing of Gary Martin, a dear friend and supporter for years.

* We acknowledge with gratitude donors who wish to remain anonymous. Chairman's Circle members are donors who have made contributions totaling \$1M or more over the past ten years.

OUR SUPPORTERS

CORPORATE & FOUNDATIONS

MPTF's programs and services would not be possible without the annual support of these corporations and foundations who give generously.

\$500,000+

Academy of Motion Picture Arts & Sciences
Amazon MGM Studios
Comcast NBCUniversal
Directors Guild of America, Inc.
Hollywood Teamsters, Local 399
IATSE International
The Douglas Foundation
The John & Marilyn Wells Family Foundation
The Walt Disney Company
UCLA Health

\$499,999 - \$250,000

Affiliated Property Craftspersons, IATSE Local 44
AGBO Films LLC
City National Bank, an RBC Company
Delta Air Lines, Inc.
Directors Guild of America, Inc.
Dolby Laboratories, Inc.
Google
Katie McGrath and J.J. Abrams Family Foundation
L'Oréal USA
Penske Media Corporation
SAG-AFTRA Producers IACF
Warner Bros. Discovery

\$249,999 - \$100,000

A + E Networks
Apple TV+
CBS Studios Inc.
Free the Work
James and Deborah Burrows Foundation
Johnny Carson Foundation
Motion Picture Set Painters & Sign Writers, IATSE Local 729
Netflix, Inc.
NKSF, LLC
Production Sound Technicians, IATSE Local 695
Southern California District Council of Laborers

\$99,999 - \$50,000

AMC Networks
AMC Theatres
Anthem, Inc.
Creative Artists Agency

Del Shaw Moonves Tanaka Finkelstein Lezcano Bobb & Dang
Edward F. Limato Foundation
GoDigital Media Group LLC
Laborer's International Union of North America, Local 300
LiUNA! Pacific Southwest Region
Los Angeles Times
MaryKaye Cashman & Family Foundation
Motion Picture Association
Paramount Global
Salem Partners Wealth Management
Sony Pictures Entertainment
Studio Utility Employees, Local 724
The Cantor Fitzgerald Relief Fund
The Gersh Agency
The Hollywood Reporter
The Horn Foundation
The Lillian Hellman Fund
The MBS Group
UTA
Yeesh Productions

\$49,999 - \$25,000

AFG/Walden Media LLC
Allen Media Group
Amblin Partners
Argyle Productions
BBC Studios Los Angeles Productions
Deadline
Delta Dental of California
eOne
Four Friends Foundation
Four Seasons Resort Maui
Four Seasons Resort Orlando at Walt Disney World® Resort
Funny or Die
Hackman Capital Partners
Hollywood Foreign Press Association
IMAX
International Cinematographers Guild, IATSE Local 600
Legendary Entertainment
Lighting Technicians, IATSE Local 728
Mattel, Inc.
New World New York
P/S
Participant
SAG-AFTRA
SAG-AFTRA Foundation

Skydance Media
The Comedy Store
The Fran & Ray Stark Foundation
The Sherry Lansing Foundation
Village Roadshow Entertainment Group
WME

\$24,999 - \$10,000

Academy of Television Arts & Sciences
Array Alliance
Art Directors Guild
Cheiron, Inc.
Costume Designers Guild, IATSE Local 892
CVS Health
Deluxe Entertainment
Evoke Advisors
First Entertainment Credit Union
Fleischer Studios - Susan and Mark Fleischer, Stanley Handman, Virginia Mahoney
Four Seasons Resort Lana'i
Four Seasons Resort Nevis, West Indies
FOX Entertainment
Gang Tyre Ramer Brown & Passman
GIORGIO ARMANI
IATSE Local 80
IATSE Local 871
Illumination Entertainment
Independent Artist Group
IngleDodd Media
Innovative Artists
LiUNA! HOD Carriers & Laborers Union Local 783
LiUNA! Laborers Local 652
LiUNA! Local 1184
LiUNA! Local 1309
LiUNA! Local 16
Make-Up Artists & Hairstylists Guild, IATSE Local 706
Marcum Entertainment Corp
Miller Kaplan Arase LLP
Motion Picture Costumers, IATSE Local 705
Motion Picture Editors Guild, IATSE Local 700
Motion Picture Mothers, Inc.
Nexstar Charitable Foundation
Rael & Letson
Riot Games
Rise Management
Steak 48
Sword Health
The Animation Guild, IATSE Local 839
The Charles V. Roven Family Foundation
The Chuck Lorre Family Foundation
The John & Jordan Davis Foundation
The Richard F. Walsh/Alfred W. Di Tolla/Harold P. Spivak Foundation
W. M. Keck Foundation

\$9,999 - \$5,000

87 North Action Foundation
Bel Air Investment Advisors, LLC
Bergen Foundation
Boyd Watterson Asset Management
Brandywine Global Investment Management, LLC
Bridgewater Associates, L.P.
Bush Gottlieb, A Law Corporation
CarelonRx

Chivaroli & Associates, Insurance Services
Coreworks
Dell, Inc.
Express Scripts
FX Networks
Gelfand Rennert & Feldman, LLP
IATSE District 2 and MPTAAC
IATSE Local 33 Stagecraft & Projectionist
Intercontinental Real Estate Corporation
J.P. Morgan Asset Management
K & Y Investments
Kanter Family Foundation
King Street Capital Management
Lazard Asset Management
McMorgan & Company
Montage Los Cabos
Odenkirk Provisiero Entertainment
Pacific Southwest Administrators
Paradigm Talent Agency
Proximity Media
Rogue Machine Theatre Company
The Banjo Fund
The Northern Trust Company
The Segal Group
The Victor Foundation
Ullico
VSP Vision Care
Will Rogers Motion Picture Pioneers Foundation

\$4,999 - \$2,500

AFSCME Local 3634
Archstone Foundation
Baccarat Hotel New York
BNY Mellon Investment Management
Cast & Crew
CESD Talent Agency
Culture Machine, Inc.
DoubleLine Capital
E.C. Prop Rentals, Inc.
Ford & Wallach
Gilbert & Sackman
Jack Schwartzman Family Foundation
Luther Burbank Savings
Meketa Investment Group
Millennium Biltmore
Morrison Community Living
Teladoc Health
The Ritz-Carlton New York, NoMad
United Way, Inc.
Washington Capital Management, Inc.

\$2,499 - \$1,000

Aava Dental
Armanino LLP
Art Directors Guild Set Designers & Model Makers Council
Artisan Partners
Calabasas Country Club
Cinema Audio Society
CoGenerate
Command B, Inc.
Corymore Foundation
Crescent Capital Group LP
Critical Mass

Four Seasons Resort Chicago
 HIT Accounting and Business Management, Inc.
 Hobson/Lucas Family Foundation
 Hoffman Sabban & Watenmaker
 Illumination Dynamics
 Keenan Healthcare
 LiUNA! Plaster Tenders Local 1414
 NEP Sweetwater
 Scenic Title & Graphic Artists, IATSE Local 800
 Shop Hands Plasterers & Cement Masons Local Union 755
 The Carrie Louise Hamilton Foundation
 The Impact Agency
 The Lodge at Torrey Pines
 The Thursday Golf Group
 United Business Bank
 UnitedHealthcare
 VSI
 White Horse Pictures
 Whitlow Family Fund
 Wohlner Kaplon Cutler Halford & Rosenfeld

ANNUAL GIVING

\$500,000+

Susan and Robert Downey, Jr.

\$499,999 - \$250,000

Carole and Bob Daly
 Caitlin and Kevin Feige
 Megan Haller and Peter Rice

\$249,999 - \$100,000

Berlanti Family Foundation
 Roma Downey and Mark Burnett
 Colin Farrell
 Jon and Joya Favreau
 Paul and Laurie Feig
 The Gianopulos Family
 John Goldwyn and Jeff Klein
 Kathleen Kennedy and Frank Marshall
 A. Scott Berg and Kevin T. McCormick
 Brian and Ksenia McGrath
 Bob Myers
 Lisa Joy and Jonah Nolan
 Karen Rosenfelt
 Anthony and Ann Russo
 Joe and Alicia Russo
 Mickey and Lee Segal
 Kate Capshaw and Steven Spielberg
 Denis Villeneuve

\$99,999 - \$50,000

Betsy Beers and Bruce Cormicle
 Lauren Shuler Donner
 Wyck Godfrey and Mary Kerr
 Toni Howard and David Yarnell
 Chris Pratt
 Ann and Richard Sarnoff
 Wendy Schaal
 Ola Ström
 Scott Stuber and Molly Sims
 Denzel and Pauletta Washington

\$49,999 - \$25,000

Byron Allen
 Dan A. Aloni
 Brian Baumgartner
 Carol and Bob Beitcher
 Jaka Bizilj
 Jerry and Linda Bruckheimer
 Marla Charlton
 George and Amal Clooney
 Kaley C. Cuoco
 Richie Egan
 Veronica Ferres
 Marc Freed-Finnegan
 Peter Kahng
 Bradley and Susie Krevoy
 Bryan Lourd and Bruce Bozzi
 Susan and Gary O. Martin
 Melissa McCarthy and Ben Falcone
 Wendy Stark Morrissey
 The Pine Family
 John Ptak and Margaret Black
 Shivani Rawat
 Austin Russell
 Marilyn and Thomas Spiegel
 Dana and Matt Walden
 Karen Keehne Zimmerman and Thomas A. Zimmerman
 Melissa Zukerman & Paul Pflug

\$24,999 - \$10,000

Cate Adams
 Jonathan Aubry
 Michael Braun
 Kevin and Claudia Bright
 Mark Cahur
 Brian Chesky
 Sandy Climan
 Charles S. Cohen
 James Costa
 Sue and Greg Daniels
 Ted Danson and Mary Steenburgen
 The John & Jordan Davis Foundation
 Toby Emmerich
 Dan and Brynne Fellman
 Joe Fischer
 Robert and Shari Friedman
 Jennifer Gillespie
 Tony Goldwyn and Jane Musky
 Carol and William Gordean
 Seth Grahame-Smith
 Desiree Gruber
 Mikey and Jay Hoag
 Russ Hollander and Helena Prigal
 Ron and Cheryl Howard
 Michael D. Karlin
 Jake Kasdan and Inara George
 Lawrence and Mary Ellen Kasdan
 David and Stellina Katzenberg
 Jessie Kornberg and Aaron Lowenstein
 Thomas and Travis Kranz
 Paul and Terry Lichtman
 Ray and Florence Littlefield
 Jan Martens
 Tom Moss

Sara E. Moss
 Tom Pelphrey
 Daniel Powell
 Patrick and Simone Purcell
 Zach Quinto
 Jay Roach
 Sherry and Jay Roth
 Ronen Rubinstein
 Teddy and Ellen Schwarzman
 Allen and Darian Shapiro
 Kristen Bell and Dax Shepard
 Stacey Sher and Kerry Brown
 Courtenay Valenti and Patrick Roberts
 Karen Vock and John Scheinfeld
 Chandra Wilson
 Alex Winter

\$9,999 - \$5,000

The Apatow-Mann Family Foundation
 Curt and Anna Behlmer
 Doug Belgrad
 Tom Bergeron
 Susan Bin
 Susannah Blinkoff and Jordan Corngold
 Julie and Scott Bobbitt
 C. Chelturn
 Christian Chivaroli
 David and Jan Demont
 Sheri Disney
 Nora Doyle and Peter Gould
 Linda Duncombe
 Leah Estes
 Thomas and Anne Fassnacht
 Ben and Jessica Feingold
 Glenn Camhi and Paul Felix
 Leah and Samuel Fischer
 Patti Flint
 Jodie Foster
 Lori and Simon Furie
 Sid Ganis and Nancy Hult Ganis
 Elyse and Harvey Gettleson
 Kevin and Neil Goetz
 Jeff and Wendy Goldstein
 Mary Hardwick
 Steven T. Hoelke
 Allison B. Janney
 David Johnson-McGoldrick
 Tara Miele Juskalian
 Justin Kirk
 Molly and Hawk Koch
 George Krupp
 Ed and Felice Lammi
 Joel Lubin
 Nicholas Mars
 Lawrence A. Mirisch
 Tendo Nagenda
 Stephen Nathan
 Harley Neuman
 Esther Newberg
 Jack Nicholson
 Rick Nicita and Paula Wagner
 Mary Parent
 Diane Cary and James Parriott
 Lisa M. Pierozzi

Julie Plec
 Darryl Ponicsan
 The Arthur & Patricia Price Family Foundation
 Bonnie Raitt
 Lee Rosenthal and Paul Slight
 Steve and Jenny Savitsky
 Amy Schumer
 Barbara Shuler
 Benjamin Smith
 Steve Starkey and Olivia Erschen
 Xavier F. Suafilo
 Alin H. Wall
 Joyce and Ken Worley
 David J. Zuckerman

\$4,999 - \$2,500

David Asplund
 Elizabeth Banks and Max Handelman
 William D. Bernstein
 Sandy Bollinger
 Cristian Calen
 Jackie D. Counter
 Paul Doherty
 dooner
 Bill Dubuque
 Bill and Susan Ewing
 Irene and Bill Exter
 Stacey and Tim Farish
 Claudine Farrell
 Leonard and Robin Garner, Jr.
 Lucy Butler and Gregory Gelfan
 Steven Grossman
 Shahram Hazany
 Gale Anne Hurd and Jonathan Hensleigh
 Abbi Jacobson
 Bruce Knechtges
 Sam Kurtzman-Counter and Alex Kurtzman
 Tony Kushner
 Mary S. Ledding
 Carol and Marvin Levy
 Matthew D. Loeb
 Greg Malins
 Chris Marcil
 Peter P. Marley
 Peter A. Mavromates
 Kelly J. McCreary
 Roger McNamee
 Michael O'Hara
 Elizabeth A. Padden
 Kristin and Grant Robinson
 Rabbi Arthur and Catherine Rosenberg
 Alexis Rappaport and Michael S. Royce
 Diane Frolov and Andrew Schneider
 Sharon Siefert
 Justin Simien
 Marietta Sirleaf
 John Solberg
 Ruben and Lorena Soria
 Wanda Sykes
 Rita Taggart
 Guy D. Tardif
 Dixie D. Walker
 Julie Weiss, CMC
 Ellie and Tom Wertheimer

\$2,499 - \$1,000

Maggie Adams
Frederick C. Albrecht
Brian Alkerton
Kary and Karen Antholis
Nick Antosca
Joe and Esther Aredas
Bonnie Arnold
Carla Meyer and Chuck Arnold
David R. Augsburg
John Badenhop
Prabhu Balasubramanian
Ike Barinholtz
Lorrie Bartlett
Tyson Beem
Valerie J. Bennett
Todd Berger
Tom Bernthal
Annika Berteau
Matthew and Cassie Biederman
Gil Birmingham
Leah Bishop and Gary Yale
Cynthia Bles Klustner
Amy Bookman
Katie and Clementine Botel
Jill Breitzman
Krysten and Walter Brennan
Alan Brennert
Adrien Brody
Chip and Marilyn Brooks
Sean McClain Brown
Mark A. Burley
Allen Burry
Daniel B. Butler
Tim Caballero
Rocco and Gerri Calabrese
Brett Caley
David and Deanna Campbell
Dee and Rick Carduner
Jared Carney and Deirdre Wallace
Steven H. Casman
David Caspe
Samuel Chalsen
Zoë Chao
Leonard and Cindy Chapman
Lynne Marie Coakley-Steele
Garry Collett
Dennis and Carolyn Cosso
Jon F. Davison
Adriana De La Cruz
Gary Delaney
Vin Di Bona
Julie Docter
Jonathan & Susan Dolgen Family Foundation
Vincent D'Onofrio
Winnie Holzman and Paul Dooley
Alexandrea Douglas
Dwayne Duff
Thomas A. Duffield, Jr.
Brian and Katy Duffy
Jay Duplass and Jennifer Tracy Duplass
Alison Eakle
Mark Echeverria
Simon Emanuel

Doug Emmett
Jeffrey R. Epstein
Courtney Fennimore
Tina Fey
Sandra and Allison Fields
Kristen Figeroid
Gary R. Fiorelli
Sara Fischer
Barbara A. Carroll and James J. Fitzpatrick
Kate Flannery
Robert Alan Foulkes
Kate S. Freeman
Harry and Judy Friedman Family Foundation
J.D. Funari
Daniel Futterman
Glenn S. and Debra L. Gainor
Beth Holden Garland and Gary Garland
Barbara Lee Gelman
Brett Gelman
Kent Genzlinger
Craig and Julie Gerber
Sara Gilbert
Sharon Goldner
Pattikay and Meyer Gottlieb
Donald P. Granger
David J. Grant
Rikki and Charles Green
Clark Gregg and Jennifer Grey
Fred W. Griggs
Laurie E. Groh
Marc Guggenheim
Steve H. Hanks
Alexi Hawley
Susan J. Hayes
Linda and Steven Healy
Allan Heinberg
Fritz Heinzle
Marlo Hellerstein
Gregg Hersholt
Whitney Hodack
Howard B. Hodges
Deborah A. Hopper
Kevin Houlihan
Flora Huang
Rebecca L. Huntley
Lauren Iungerich
Xylor Jane
Cord Jefferson
David Jefferson
Fredda and Scott Johnson
Martha Johnston
Kathy Jones
Marta Kauffman
Jeff Kauffmann
Rebecca Kearey and Matt Gannon
Richard and Jennifer Kelley
Tim and Barbara Kelley
Keya Khayatian
Mike Kichaven and Ilyanne Morden Kichaven
Leslie and David Kimball
Jim Kirsch
Christina and Kenneth Koch
Nicole and Chris Kovalski
Nick Kroll
Nijja Kuykendall

Pat Lau
Jackie Joseph Lawrence
Anna Leh
Thomas Lennon
Niceole Levy
Damon and Heidi Lindelof
Marganit V. Lish
Stephen S. Lombard
Elissa and Mark Loparco
Phil Lord and Irene Neuwirth
Alex and Frania LoVerde
Gentry and Marjorie Lovett
Yuri Lowenthal and Tara Platt
James Lundin
Andie MacDowell
Monica and Sterling Macer
David Mandel
Michelle A. Manolovic
Lisa B. Margolis
Brit Marling
Andrew Martin
Bonnie Matchinga and James McKenzie
Timothy L. Matheson
Joe Matza
Amy McDonald
Chris McKay
Joe Medjuck
Alyssa Milano
Michael F. Miller, Jr.
Regina Miller
Lauren Montgomery
Leslie Morgenstein
Paul Mowry
Heidi J. Nakamura
Tia Napolitano
Daniele Nathanson
Mohammad Navid
Richard and Joanne Nelson
Cory Ness
Stanley Newman
Randy O'Connor
Gregg and Debbie Oppenheimer
Andrew Ortiz
Robert and Ann Osher
Carolina Paiz
Julie and Mark Petri
Kathy and Glenn Pierce
Carolyn and Bob Pisano
Carolyn A. and John M. Poer
Vadja Potenza
Stephen and Natasha Prime
Nicholas Pryor
Renate Radford
Phil Ramos
Navneet Rawal
Fabienne N. Rawley and Kendall Marsh
Robert Redford
Jacob Reed
Rebecca Rhine
Craig and Barbara Ridenour
Geneva Robertson-Dworet
Alma C. Robles, DMD
Jaci Rohr
Becca Rothschild
Gregory Ryan

Ian Grundy Scheibel
Rebecca Segal
Stan and Sara Sellers
Lily Semel
Risa Shapiro
Arnie and Carol Shupack
Siilisha Sidell
Katie R. Silberman
Nigel Sinclair
Mary Quen Singer
Kevin Smith
Mark Smith
Johnny Sneed
Buffy Snyder
Vicki Solmon
Lorraine and Steven Spira
Nick St. Angelo
Joshua Staheli
Mark Stamper
Jill A. Stirdivant
Edith Sullivan
Anne Swan
Elizabeth Tanzil
Sarah Tarkoff
Peter Taylor
Julia Teraceno
Praveen Thadhani
Susan Thomas
Nicholas Thull
Michael T. Tidik
Emily Ting
Lawrence H. Toffler
Robbie Tollin
Jessica Golden Tolsky
Randy and Susan Torpin
Aisha Tyler
G. Bryan Unger
Will Urie
Jennie Urman
Kathy Virkler
Lilly Wachowski
Sheila Walcott
Lucinda Ward
Robert Warner
Susan Kelechi Watson
Teresa A. Wayne
Darren R. Webb
Shannon Brown and Mark Weingartner
Blair Westlake
Maurissa Tancharoen Whedon
Jeff Wheeler
John and Samantha Williams
Hal Williams
Ruby and Mark Wilson
David A. Winkler
Vanessa Newell and David Witz
Roland Wong
Winnie Zhang

PLANNED GIVING

Thank you to all those who leave a gift to MPTF in their Estate Plan.
We help pay it forward in your honor and value the entertainment community's spirit of family and legacy.

Ian Abercrombie Estate
David Alvarado Estate
Samuel Anderson Estate
Jess G. Anscott, Sr. Estate
Malcolm Atterbury Estate
John Badenhop Estate
Conrad S. Bain Estate
Jay Baldwin Estate
Allen Baron Estate
Sally Benson Estate
Pierre P. Berg Estate
Kenneth Ronald Berry Estate
Robert S. Blee Estate
Gerald W. Brown Estate
Lucille M. Stofer Burdick Estate
Charles Castelli Estate
Jorge C. Cervera, Jr. Estate
Robert G. Cervi Estate
Susan K. Chilcote Estate
Dennis L. Clark Estate
Sharlene F. Collins Estate
Joan Crawford Estate
Alan Crosland Estate
Arthur A. Curtis Estate
Michael B. Davis Estate
Daniel De La Vega Estate
Dorothy Dodie Demme Estate
Albert B. Denney Estate
Robert Dewitt Estate
Richard L. Dorsey Estate
Leonard Drake Estate
Marion Dugan Estate
Jeffrey Elliott Estate
Pauline Estey Estate
Charles K. Feldman Estate
Alfred T. Ferrante Estate
Wayne Fisher Estate
Ruth Brooks Flippen Estate
William A. Fobert Estate
James J. and Cynthia M. Frawley Estate

Ben Freedman Estate
Beverly Garland Estate
James Garrett Estate
Leslie T. Gaulin Estate
Leslie Geller Estate
Larry Gelman Estate
Robert Bruce Gray, Sr. Estate
Ann Guilbert Estate
Greg A. Hall Estate
Peter F. Hansen Estate
James Harrington Estate
Eugene W. Harvey Estate
Edith Head Estate
Donald E. Heitzer Estate
Christopher Hewett Estate
William Holden Estate
Mary Jackson Estate
Paul C. Jacobsen Estate
Robert & Meredith Janssen Estate
Judith A. Jarvis Estate
Peter Juliano Estate
DeForest Kelley Estate
Mildred V. Kerns Estate
Margaret S. Kilty Estate
Timothy King Estate
Paul and Marjorie Kissner Estate
Steven Kruzlock Estate
Vivian Ledesma Estate
Dona Holloway Lichtenfeld Estate
Jon Lormer Estate
Curt Lowens Estate
Carroll D. Lyn Estate
William Mamches Estate
Harriet Margulies Estate
Barbara J. Marks Estate
Gary O. Martin Estate
Darren McGavin Estate
Dennis P. Mclean Estate
Ralph and JoAnn Mikkelsen Estate
Vincent Modugno Estate

Read L. Morgan Estate
Wayne Mort Estate
Larry L. Newman Estate
Gladys E. "Gee" Nicholl Estate
Donald Nicholl Estate
W. Paul Nuckles Estate
Arthur Sinclair Olson Estate
Mildred L. O'Toole Estate
Eleanor Parker Estate
David L. Perna Estate
Jerry Pirozzi Estate
Steven G. Pollock Estate
Charles H. Record Estate
Charles T. Reed Estate
Jon W. Robinson Estate
Leonard Rogel Estate
Robert F. Rusello Estate
Robert Schlenger Estate
Walter Seltzer Estate
Charles A. Severson Estate
Anne Seymour Estate
Benjamin H. Slack Estate
Grace and Dan Slusser
Leonard Spigelgass Estate
Jack Starkey Estate
Bob Steele Estate
David W. Steen Estate
Max Steiner Estate
Leonette B. Steiner Estate
Gil Stratton Estate
Patrick Tousignant Estate
Teresa Tuttle Estate
Carlos Valle Estate
Philip B. von Mohr Estate
Tatsuko Watanabe Estate
Carol L. Wenger Estate
Georgina V. Wood Estate
Sirvart Yekikian Estate
Mary J. Young Estate
Barry Zajac Estate

ADVOCACY

ENTERTAINMENT ALUMNI CLUB

A creative and social environment for industry retirees of all affiliations to socialize, connect with former colleagues and peers, and have ongoing engagement with the industry and with MPTF.

MOTION PICTURE MOTHERS

Founded in 1939, an organization of mothers of industry members who support MPTF's Country Home to enhance the lives of the residents.

NEXTGEN

A diverse group of younger entertainment industry professionals who represent the many aspects of film and TV and support MPTF's mission of taking care of our own.

PROFESSIONAL ADVISORY NETWORK (PAN)

A dynamic group of attorneys, business managers, CPAs, financial planners, and wealth managers with clients in the entertainment and sports industry.

MPTF VOLUNTEERING PROGRAM

An internationally recognized program uniting generations through meaningful opportunities on campus or in the community creating bonds and purpose.

ALWAYS MOVING FORWARD

Dear MPTF Community,

Each year when I sit down to write this letter to you, our supporters, our backbone, our COMMUNITY, I reflect upon a theme for the year and inevitably I am overwhelmed with gratitude and a supreme sense of resilience. It's naive to think that life will not continuously present challenges, but the past four years sure have tested us.

We collectively made it through a years-long global pandemic that brought the world to a halt. We persevered in a new, post-pandemic landscape that saw MPTF going through some pretty major financial hurdles. We then faced the horizon with confidence and renewed optimism, only to be sidelined by strikes and work stoppages.

I believe now more than ever that together we can get through anything and will do so with love and lessons along the way.

I want to take a moment to not only thank you for your support of MPTF and the services we provide to our entertainment family, but also to thank you for being kind to us. You showed up when we needed you, made calls on our behalf, lent your time as volunteers, and remained steadfast advocates during some pretty challenging times. You have made a profound difference in the lives of many.

Let me issue a bit of a challenge to close out this note... how can we all be better? We want to hear from you, see you, talk to you. Let us carry forward the lessons we've learned and the bonds we've forged. Let us continue to support and uplift one another, knowing that together, we are stronger than any obstacle that may come our way.

With love, gratitude, and awareness,

Courteney Bailey

