

100 YEARS

OF TAKING CARE OF OUR OWN

2021 ANNUAL REPORT



MPTF | 

Caring is Infinite

MISSION

MPTF supports our entertainment community in living and aging well, with dignity and purpose, and in helping each other in times of need.

MPTF is supported by the philanthropy and volunteer services of fellow entertainment industry members. Our industry is unique and we have a history of taking care of our own like no other industry in the world. People are at the heart of what we do each and every day, and it's because of the generosity of countless donors, families, and volunteers that we can deliver services to thousands of people.

2022 Board of Directors

Bob Beitcher
George Clooney
Jim Gianopulos, Chairman
Russell Hollander
Michael Karlin
Hawk Koch
Jessie Kornberg
Matthew D. Loeb
Lisa Pierozzi
Nina L. Shaw
Casey Wasserman
David White

2022 Board of Governors

J.J. Abrams	Curtis "50 Cent" Jackson
Byron Allen	Kevin McCormick
Betsy Beers	Christopher Nolan
Greg Berlanti	Peter Rice
Lauren Shuler Donner	Karen Rosenfelt
Channing Dungey	Ann Sarnoff
Dr. Eric Esrailian	Emma Thomas
Tony Goldwyn	John Wells
Bonnie Hammer	



BOB BEITCHER
MPTF PRESIDENT & CEO

LETTER FROM THE CEO

100 YEARS STRONG

I felt very confident when I put my pen down on last year's letter that this year's would be filled with brightness and optimism. Well, not quite. The year of 2021 was filled with the same daunting challenges for us: COVID-19 cases (in January) among residents; COVID-19 testing for residents and staff; virtual events (Night Before) with reduced fundraising; staffing shortages in nursing and hospitality; and the mental and emotional exhaustion felt by everyone on the campus at the end of a second year of protective (and highly restrictive) COVID-19 protocols. Think of this the next time you put on a mask to go into the grocery store and remember how much you dislike the experience: we have had health services staff wearing N95s for 8-hour (and sometimes 16-hour) shifts for two years, protecting our residents and each other in a very stressful environment. I can't say enough in praise of the MPTF staff. They truly are heroes.

And I was so honored to be flanked by nurse Norma Carranza, RN and social worker Jennifer Jorge, LCSW when I accepted the Jean Hersholt

Humanitarian Award, an Oscar statuette, on the Academy Awards show on April 25. This was the first time the Academy chose an organization, rather than an individual, for this award, and in our 100th year it was fitting and thrilling. With 75 staff members in the audience and MPTF advocate Bryan Cranston as the presenter, it doesn't get much better! MPTF's Oscar and one of Jean Hersholt's Oscars now proudly reside in the lobby of the Louis B. Mayer Theatre on our campus!

Yes, our 100th year was bumpy, unsettling, and draining, but once again we demonstrated that taking care of our own, even in tough times, brings joy to our hearts, lifts our spirits, and reminds us why MPTF is so absolutely critical to our industry.

Bob Beitcher
MPTF President & CEO

2021 THE PARTS WE PLAY

4,644

COMMUNITY & CAMPUS
SOCIAL SERVICES
PEOPLE SERVED

\$3,508,259

CHARITABLE ASSISTANCE

362

REFERRALS FROM
MPTF/UCLA HEALTH CENTERS

COMMUNITY FINANCIAL ASSISTANCE

90%



INSUFFICIENT INCOME IN RETIREMENT

9%



LOSS OF EMPLOYMENT

1%



OTHER INDIVIDUAL CHALLENGES

PALLIATIVE CARE



626
PEOPLE
SERVED

340
PATIENTS

286
FAMILY
MEMBERS

MPTF BY THE NUMBERS

272

WASSERMAN CAMPUS
RESIDENTS

1,245

ELDER CONNECTION 65+
CLIENTS AND ADULT CHILDREN

504

UNDER 65 CLIENTS

128

PATIENTS (SERVED)
SAMUEL GOLDWYN, JR. CENTER
FOR BEHAVIORAL HEALTH

1,618

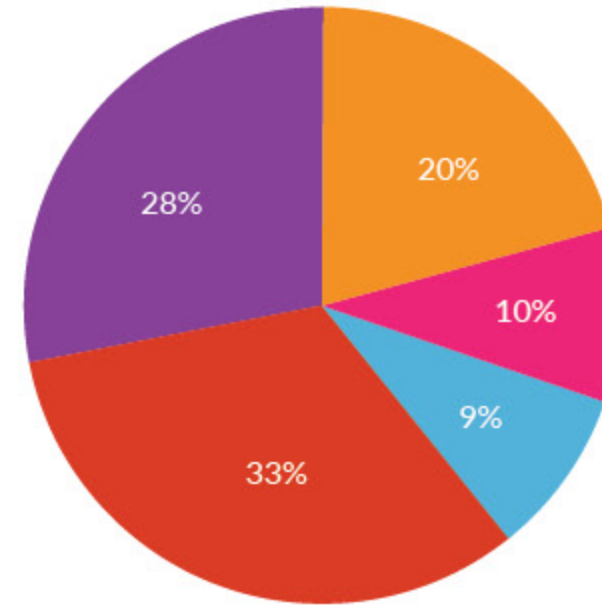
HEALTH INSURANCE COUNSELING

295

RECIPIENTS
DAILY CALL SHEET

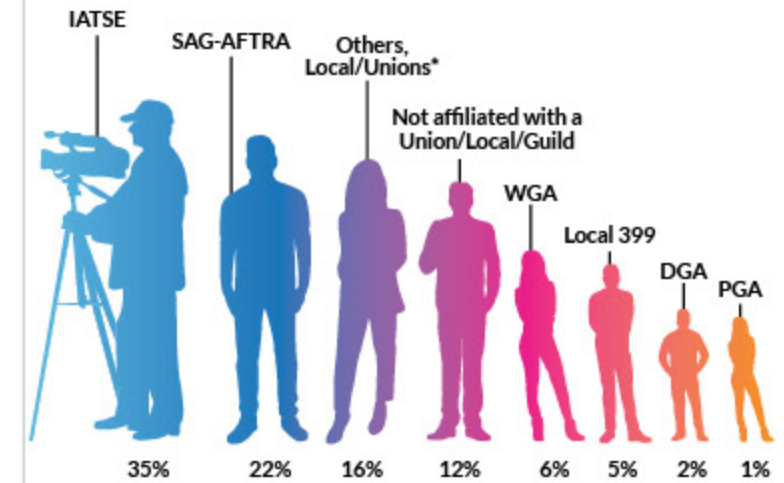


NEEDS AT INTAKE



- MENTAL HEALTH, SOCIAL ISOLATION, SAFETY, MEMORY LOSS
- SUPPORTIVE COUNSELING
- FINANCIAL ASSISTANCE
- CASE MANAGEMENT
- INTEREST IN LIVING ON CAMPUS

INDUSTRY AFFILIATION



*Others includes Locals 174, 1, 724, 40, 1877, 47, 755, NABET, Agents and more

SAMUEL GOLDWYN, JR. CHILDREN'S CENTER

130
CHILDREN
ENROLLED



13
FAMILIES
SUBSIDIZED

VETERAN BENEFITS



880

VETERANS/SPOUSES SCREENED

\$303,614

RETROACTIVE BENEFITS RECEIVED

\$17,509

IN ONGOING MONTHLY BENEFITS

VOLUNTEER PROGRAMS



INTERGENERATIONAL
PROGRAMS SERVING CAMPUS AND
COMMUNITY INDUSTRY MEMBERS



THE ACADEMY HONORS MPTF

WITH THE JEAN HERSHOLT HUMANITARIAN AWARD

In 1921, millions of lives were taken by the worst global pandemic in human history. The country was recovering from the end of the first World War and many film workers were returning to Hollywood and struggling to get by. Silent film actor Mary Pickford was determined to establish a charitable assistance organization to support those in need.

Nearly one hundred years after the launch of MPTF (originally known as the Motion Picture Relief Fund), another global pandemic brought the world and our entertainment industry to its knees. By now, MPTF had become the industry's bedrock, empowered to do exactly what it was created to do—take care of our own. And it did! Through financial grants and case management, through social calling and food drives, MPTF was there for our workforce. To recognize this work and the support MPTF has given to the entertainment community for 100 years, the Academy of Motion Picture Arts and Sciences honored MPTF with the Jean Hersholt Humanitarian Award, an Oscar statuette.

“Bryan Cranston is a member of our industry family with a special connection to MPTF.”

Presented to CEO Bob Beitcher by industry icon Bryan Cranston, for many it was the highlight of the Oscars show. For the first time, an Oscar was given

to an organization, not an individual; and a nurse and social worker (Norma Carranza and Jennifer Jorge) were onstage, flanking Beitcher, to accept it. An additional 75 MPTF staff members were at the Dolby Theater for the ceremony and a wonderful reception provided by the Academy.

Cranston's own connection with MPTF is a special one. His mother, Peggy, a former actress, experienced Alzheimer's disease and spent her final years at Harry's Haven on MPTF's Woodland Hills campus. It was there that she also enjoyed her last sweet romance with another resident. "My mother was a very spry woman," muses Cranston. "She was a very flirtatious lady, you might say." Peggy had four husbands and, according to Cranston, scores of suitors.

When he was acting in and directing the hit TV series "Malcolm in the Middle," Cranston received a call from a nurse practitioner, Susan, at Harry's Haven. "First of all," she said, "I need to tell you that your mother is fine." Bryan unclenched as Susan continued, "Your mother, Peggy, she's developed a relationship with one of the other patients." "I have one very big concern," said Cranston. "What if Mom gets pregnant?" They shared a good laugh and Cranston was comforted knowing that his mother had found love so late in life.

Thanks to the bond Cranston forged with MPTF, it was a distinctive honor to have him present this special statuette celebrating our 100-year mission of taking care of our own.

THE PANDEMIC

THROUGH THE EYES OF RESIDENTS

“I think MPTF is the greatest place in the world,” says producer Andrew Wald, a Villa resident. It reminds him of his family home—a place that was always filled with laughter and people he loved. Wald served as primary caregiver for his mother, who passed away in 2012. His brother died of cancer in 2014. Following these losses, Wald felt isolated and alone. Moving into the Villa just before the pandemic hit was a huge blessing for him. The Villa was his sanctuary during the crisis. “I’m the luckiest guy, being here,” says Wald, who feels a personal connection to his new lodging. He’s the son of Hollywood producer Jerry Wald, the man behind such classics as “An Affair to Remember,” “Mildred Pierce,” and “Key Largo.” Jerry Wald worked closely with producer Ray Stark, the Villa’s namesake. “I love being here,” says Wald. “I’m pretending I’m snowed in somewhere or doing Hell Week for a fraternity—with better food!”



ANDREW WALD

During the worst of the COVID-19 surges, Wald and his fellow residents took meals in their rooms. Wald indulged by ordering everything off the menu and quickly gained 15 pounds. “It’s been a little goofy,” he laughs.

“I love being here, I’m pretending I’m snowed in somewhere or doing Hell Week for a fraternity—with better food!”

Wald lauds the incredible staff at the Fran and Ray Stark Villa. He’s deeply grateful for their commitment to meet everybody’s needs while keeping all residents safe and in good spirits, even if “[they] got on everybody’s case about wearing masks.” Nancy, a concierge in the Villa, was especially diligent about PPE, ensuring all staff and residents had their noses and mouths fully covered. Wald thinks the care and caution by the Villa staff are why he hasn’t fallen ill with COVID-19, while more than 60% of the people in America have gotten it. He’s also aware that many senior communities were hit hard by the virus, but the community under the Villa’s roof took care to protect one another. “It was boring as hell,” Wald adds, but with a room overlooking the Roddy McDowall Rose Garden, Wald has “my little slice of paradise. I can look out at the world and all of its troubles, with a nice porch to sit on and a deck chair.”



KAY WEISSMAN



Use the code to see more.

“What saved me—certainly—was Creative Chaos,” says Kay Weissman, an actress who moved to the MPTF Fran and Ray Stark Villa after her husband, publicist Murray Weissman, passed away. Creative Chaos is a thrice-weekly MPTF-produced live-streamed program (it is produced on campus in the movie theater) featuring everything from a half hour chair workout to “Celebrity Password” and “Mafia”; from “Cinephiles” (film mavens discussing various film topics) to “Inside Hollywood,” an interview show hosted by producer and board member Hawk Koch. “Watching it,” says Weissman, “I was in awe of the generosity of everybody putting in their time just for us, to make this happen for us.” Creative Chaos was certainly the antidote to doldrums, reports Weissman. As was her routine of socially distanced dog walks with a tight group of fellow dog lovers at the Country House. With all the scary things happening in the world, Weissman says living at the Villa feels like she’s moved inside a fond childhood memory of more innocent times. She also writes with the Grey Quill Society. Weissman loves her home and community so much that she now serves on the Resident Council. “I’m so very, very blessed that I’m here,” says Weissman. “They’re wonderful to us here. They’re just like family.”

“Champagne and dinner at five! Be there!” These were the first words Maggie Abbott, a retired William Morris agent, heard when she moved into the the Motion Picture Country House on September 1, 2021. The invitation was from an old industry friend and Country House resident, someone Abbott had known for 40 or 50 years. During the first part of the pandemic, Abbott had been living on her own in the desert trying to navigate the challenges and new normals we all struggled with. With her move into the Country House, whenever she has any trouble around her home or with computer hassles, there’s someone friendly and enthusiastic there to help her out. She says the move was a fortunate escape from experiencing the height of the pandemic separation. These days, Abbott has a full schedule and robust social life. She joined the Grey Quill Society, MPTF’s writing group, where she workshops and submits stories. She regularly attends first-run film screenings at the Susan and Gary Martin Screening Room and various physically distanced events with friends on campus. The experience is a bit like hanging out at base camp on a film set with all the wonderful talent, like grips, hairdressers, actors, and cinematographers—but with none of the pressure of production. **“I wouldn’t be anywhere else!”** says Abbott.



MAGGIE ABBOTT



FOR RESIDENTS BRIGHT MOMENTS DURING COVID-19

2021 was a struggle for many, but residents on campus found several fun and engaging ways to pass the time. **(1)** A casual Nature Photography contest gave way to a full-blown art show. **(2)** An introduction to various Coffee Roasts, held outdoors, quickly became one of the most sought-after gatherings. **(3)** The Grey Quill Society found a new and safer place to meet in order to allow social distancing. **(4)** A huge Garden Party

Bash was thrown to highlight all the work residents put into improving the gardens at the Villa. **(5)** Barbara Turman, director of Gift Planning, led a trip to the Academy Museum. **(6)** Aztec dancers visited for the campus-wide celebration of Día de los Muertos, "The Day of the Dead," organized by our Director of Residential Living, Lorena Soria. **(7)** Community webinars connected professionals, residents, and supporters.



Use the code to see more.

Academy Museum of Motion Pictures.
Photo by Joshua White, JWPictures/
© Academy Museum Foundation



COVID-19 VACCINATION CLINICS

In 2021, MPTF held numerous vaccination clinics, on campus and in the community, for residents, staff and staff family members, and eligible industry members. A total of 3,982 vaccines were administered throughout the community.

Here's how the year was experienced by three of our own who made it happen: Sheila Martin, Director, Risk Management & Regulatory Affairs; Danielle Castaneda, Risk Management and Regulatory Affairs Specialist; and Julia Kyle, Director of Pharmacy Services, MBA.

When the COVID-19 vaccines were first given authorization by the FDA, the overriding feelings were relief and hope. Relief that there was finally something proactive to be done and hope that we were taking the first steps to recovery. Now there was something that we could do to help.

The MPTF vaccination team swung into action and began vaccinating residents and employees in December 2020. Multiple clinics were held over several weeks to ensure that as many people as possible who touched MPTF's campus were vaccinated. It took the manpower of many, many staff members and volunteers to make it happen; and it was incredibly heartwarming to see so many, who were already stretched to the limit, step up to make sure that the clinics were a success. We even had Bob Beitcher pitching in to clean chairs in his new role as CEO of "Bob's On-the-Job Cleaning Service!"

As we moved further into 2021, the team switched gears and reached out to the entertainment community. Multiple clinics were held on campus to offer vaccinations to members of the entertainment community and to employees' family members. The leadership of Local 80 opened their Burbank soundstage, which allowed us to offer clinics to those who couldn't make it to the Woodland Hills campus. The MPTF social workers swung into action, contacting clients to see who would be interested in being vaccinated. They were even able to arrange transportation to and from the clinic for those in need.

No matter how tired we felt, the excitement of hopefully being able to make a difference never lessened. Seeing the emotion in people's eyes as they received their first vaccination is something we will never forget. It is impossible to count how many times people said, "I've never been so happy to receive a shot in my life. Thank you."

At the end of the clinics, the staff and volunteers could often be found dancing along to "YMCA" (moves included). From relief and hope, we had found joy. The MPTF COVID-19 vaccination clinics were, and continue to be, a team effort.

We came together, grew together, and stayed together. We continue to offer booster clinics on campus and will do so as long as they're needed.

LARGER THAN LIFE: THE JAY JACOBS STORY

Retired William Morris talent agent Jay Jacobs had firsthand experience with many of the ups and downs of showbiz life. Born in Philadelphia, Jay grew up an avid fan of film, TV, and music before he started working for the William Morris Agency in 1961. For 35 years, he was a successful agent and a founding member of the agency's music department, booking acts like The Supremes. At the time, rock and roll was taking off, with shows everywhere from armories to pavilions, "wherever we could create a show," including one of his first bookings: The Rolling Stones at Auburn University. Jay repped acts ranging from Simon & Garfunkel to Diana Ross to The Beach Boys. It was at William Morris that Jay first found out about MPTF. "We took tours from our office for the agents to actually see how it's run here," Jay explains. "We knew all about its incredible resources for people in the business who came here for help with housing, medical treatment, food. For one reason or another, they needed help."

Maria Gisina helped him with rent, car insurance and repairs, and dental expenses. Jay was no longer isolated and had a safety net to rely on.

Back in 2011, Jay applied for residency on campus "just in case." As his health started to decline in 2020, his Elder Connection social worker encouraged him to move on campus, but Jay was ambivalent. Then, in early 2021, he broke his ankle and was diagnosed with Stage IV lung cancer. Suddenly he was in need of around-the-clock care, and his son reached out to his social worker looking for the best possible options. Team collaboration was essential, and with advocacy from his social services team, Jay made his new home at MPTF Hersholt Place with enrollment in our Palliative Care program. Over the years he was supported by multiple programs, including Elder Connection, Home Safety, the residential care team at Hersholt Place, social services, and Palliative Care. Moving around in his power chair and making new friends, Jay adjusted well to his new life, surrounded by pictures of his children and his beloved golden retriever, Kona.

"You can't sum it up in one sentence, not Jay's life."

You can't sum it up in one sentence, not Jay's life. He was charming and generous, with a distinct self-deprecating sense of humor and wonderful stories to tell, often accompanied by a cheesesteak sandwich. He'd say that giving is much more pleasant than asking for help. Jay couldn't imagine then that one day he would need the support of MPTF himself, but in the late 2000s he lost his home. He turned to MPTF for guidance and was able to move into a senior apartment complex in 2012. His world shrank quite a bit, but slowly he regained his independence. Jay needed monthly assistance for basic living and medical expenses, so the MPTF Elder Connection social worker

"I'm now enjoying the benefits of a wonderful place that I knew of way back when and didn't think that I would ever be here," Jay said. "But things change, and this is a great place to be. I don't have to take care of my physical needs, medical needs, the laundry, breakfast, lunch, and dinner. It's really a godsend for so many people in the industry." His children were also involved in his care; as he explained, "My son turns 55 next year, and my daughter, a schoolteacher in North Hollywood, turns 51. They're terrific people. They support me and MPTF, and it certainly takes a load off them to not have to pay for all of my needs—which would be impossible. Of course, no parent wants to have help from their children, so it's terrific that MPTF is there for me—and for them." Sadly, Jay passed away in November of 2021, but MPTF was honored to make his final days so happy and peaceful.





ANTONIO RAE: IT'S OK TO ASK FOR HELP

Antonio Rael is a modern-day

Renaissance man: a SAG-AFTRA member now for 33 years; a make-up artist to over 10,000 clients, including the likes of Renee Zellweger, Nia Vardalos, and Burt Bacharach; a talented mural painter; and a teacher for 20 years to some 5,000 students.

It's safe to say that Antonio has worn a few hats in his 58 years.

"If it weren't for nonprofits like MPTF, I would have given up."

But a few years ago disaster struck, and Antonio was diagnosed with cancer. After his diagnosis, Antonio couldn't work as much and quickly burned through his life savings on medical expenses. "It's a lot of stress when you're going through hard times! My credit score was plummeting. I was at risk of getting my car taken away. It was going to be repossessed and I was going to become homeless ... and if it weren't for nonprofits like MPTF, I would have given up."

Fortunately, Antonio was brave enough to reach out and ask for help. An industry friend recommended he apply for a grant from MPTF. "I didn't even know it was available." Working with MPTF social worker Nicole Matsumoto, he was able to secure grants not only with MPTF but with several other organizations. "I feel like Nicole's my guardian angel." Antonio was able to pay off his medical bills, complete payment on his car, and stay in his home.

It's still a struggle, but Antonio is working hard to get back on his feet. "I'm still climbing back from the

pandemic ... so I'm still trying to create a nest egg. I'm not in the clear yet, but I am better off than I was two years ago with the help of MPTF."

Antonio has become a huge advocate for MPTF and recommended it to several friends in need. He says it can be a struggle to convince people to ask for help. "I think it has to do with ... them feeling insecure ... or feeling shame from it. So I actually told several of my friends, I said, 'Don't feel like you've failed. You know, in life sometimes we all need help.'"

From adversity, Antonio has found that by asking for help, he's also been able to give back through his art. At the MPTF Day at the Ranch event last year, Antonio donated one of his paintings, which sold at auction. This helped lead him to more painting opportunities, including several murals for large-scale productions like "RuPaul's Drag Race" and "Penny Dreadful: City of Angels."

In addition to his painting projects and continued advocacy for MPTF, Antonio is getting back into acting and was recently included as a stand-in on "Dancing with the Stars." He also sells over 300 different items on his Etsy page, including a "Say Gay" pin to support the LGBTQ+ community that's gone viral.

"You know, it's crazy how ... I'm just trying to do good and then good things come out of it for me as well, which is great ... that makes me feel good."



Use the code to see more.



AN INDUSTRY GUIDE TO HEALTH INSURANCE

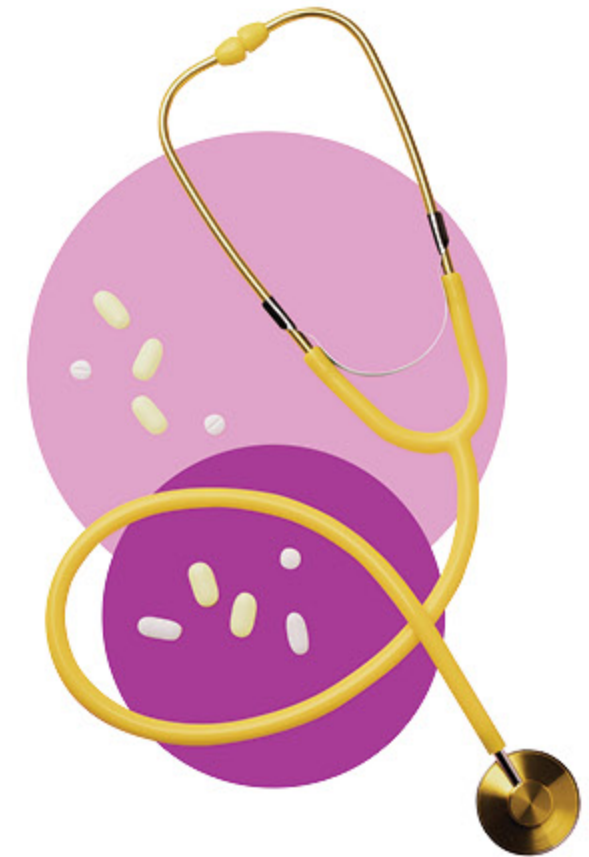
One of the most pressing issues

for entertainment industry members and their families, and workers in general, is health insurance. In the original "gig economy," the entertainment industry, trying to find the right plan for yourself and your family can be an overwhelming challenge. Entertainment Health Insurance Solutions (EHIS), a joint program of MPTF and the Entertainment Community Fund, offers personalized counseling and enrollment support for industry members to purchase the best plan to fit their individual and family needs.

"EHIS California can guide you through the process."

2021 posed a unique set of issues for our staff. Jennifer Louisell, Director of Insurance Services for that year, was able to help over 2,000 people in the 12-month period. One significant issue, she explains, is "really the changes in legislation and the ability to manage those changes." The transition in 2021 from the benefits of the American Rescue Plan Act, enacted in 2020, with low co-pays and premiums, to a more "normal" health insurance environment was disruptive: in some cases, co-pays went from \$5 to \$35 and premiums from \$80/month to \$800/month.

As the entertainment landscape and the ensuing insurance needs continue to evolve, we are here to move with the times and help where it's needed. Our new Director of Insurance Services, Annette Greene, will be happy to help you with your questions and concerns at HealthInsurance@mptf.com while helping you benefit from this essential service, and you can find out more at ehisca.com.





PALLIATIVE CARE DELIVERING SMILES

“All of a sudden, they showed up with gifts and things for my daughter, and it literally made my Christmas.” That’s how **Vince**, a IATSE Local 80 member for 28 years, describes the gifts he and his daughter received in December from the Angels, a volunteer donation group. When he was blindsided with a cancer diagnosis, Vince says, “I was devastated and blown out of the water, with no idea what to do. ... Having been a provider all my life, I never really thought to ask, I never knew how to ask. It’s interesting how the stresses in life really affect you physically. It was a learning curve.” Now with a panel of experts at MPTF’s Palliative Care program listening, discussing, and addressing his many needs, he’s finding ways to rebuild both physically and mentally.

“Honestly, they’ve saved my life on more than one occasion.”

Diagnosed with breast cancer two weeks shy of eight months into her first pregnancy, **Mirna**, a Local 706 member, had early induced childbirth so she could start chemotherapy treatment immediately. Between managing cancer, her therapy, and raising her infant son Leo, she was referred to MPTF through her union rep Polly Lucke. MPTF’s Social Services team connected Mirna with our Palliative Care team and they have been miracle workers for her. “I wasn’t able to pick up my baby because I couldn’t pick up or lift or push more than five pounds,” she says as an example, “so they actually sent me someone to help me with the baby.”

For Christmas, she and her family got an Angels visit complete with gifts, diapers, and supplies, plus a holiday meal from our Engagement department.

Ryan, a sound veteran in television for 27 years and a Local 695 member, knew about MPTF and even worked on our 95th anniversary celebration five years ago. With ongoing health issues, he turned to our Palliative Care team and regularly had Zoom calls with them, including social worker Anne Front and chaplain Rabbi Arthur Rosenberg. “These last two years, going through all of the medical stuff that I’m going through and currently waiting to go on permanent disability, they’ve been integral,” he says. **“Honestly, they’ve saved my life on more than one occasion,”** including a year ago when they urged him to go to a hospital after recognizing he’d had a heart attack. “It was a week after my 40th birthday, and I just didn’t see how it was possible that I was having a massive cardiac event.” Following a double bypass last August, he’s been working closely with the MPTF team on everything from navigating a disability claim to health insurance and financial aid. For the holidays, he and his son got to enjoy a delivery of gifts to open up on Christmas morning together. “They’re like angels,” he says now of his care team. “They’re really the biggest blessing I have in my life right now.”



Use the code to see more.

**IN 2018,
I DIDN'T THINK
ABOUT IT.**

I'm a stuntwoman. And I've doubled for powerful actors. But I never thought of how an unscripted scene of PTSD and abuse might tear through my family and set us adrift. In a dark time, MPTF helped us make our way back. Back to a place where the future is bright, the stunt motorcycles ride fast, and the love runs deep.



MPTF | 100
Caring is Infinite

MPTF exists through the generosity of others. In honor of our 100th year of service, please play a part in supporting our entertainment community. Read more of Ashlei Tave's story and learn how we are the safety net for an industry at [MPTF.com](https://www.mptf.com).



CARING IS INFINITE

MPTF's 100th PSA Campaign showcases the stories of just a few of our recipients of care and industry professionals who support that care.

**IN 2007,
I DIDN'T THINK
ABOUT IT.**

I was a proud member of Local 724. Still am. We'd saved for years to buy our first home. And a new baby, our third, was due in weeks. Life was hectic, crazy... perfect. Then suddenly this thing we thought couldn't happen, did. The industry just shut down. And in an instant: no work, unyielding panic. When MPTF helped us with enough to pay the mortgage, it was the yes that lingers in my soul to this day. We survived. MPTF was the safety net I didn't know I needed, until I did.

Bill Jacob

MPTF | 100
Caring is Infinite

Read more about Bill Jacob's story and find out how you can help ensure the safety net for the entertainment industry for the next 100 years at [MPTF.com](https://www.mptf.com).

**IN 2012,
I DIDN'T THINK
ABOUT IT.**

ALS came on insidiously. When my husband Jon was told "two to five years," it was as unfathomable as it was terrifying. Job, home, car, all consumed by the illness. I never considered a disease might take everything—until it tried. 20 care facilities, all unwavering in rejection. Until MPTF opened a door. They brought joy, gave meaning, inspired purpose, and made our family whole again. Precious moments, and just beyond six years that proved life had much love and mercy yet to give.

Roberta Huntley

MPTF | 100
Caring is Infinite

MPTF exists through the generosity of others. In honor of our 100th year of service, please play a part in supporting our entertainment community. Read more about how we are the safety net for an industry and why it matters to you at [MPTF.com](https://www.mptf.com).

**IN 2017,
I DIDN'T THINK
ABOUT IT.**

Fire! And devastation. All the amazing roles of a lifetime would never have prepared me for this. *Taxi Driver*, *Mean Streets*, *The Silence of the Lambs*. I'd lived the highs of a great career under the lights. Yet nothing held a candle to everything—past, present and future—consumed in a flash. When a wild fire set my life ablaze, I didn't think about how ruin is something no one plans. That day taught me newfound respect for love, compassion, caring, and the incalculable need for an organization like MPTF.

Henry F. Rothberg

MPTF | 100
Caring is Infinite

MPTF exists through the generosity of others. In honor of our 100th year of service, please play a part in supporting our entertainment community. Read more about how we are the safety net for an industry and why it matters to you at [MPTF.com](https://www.mptf.com).

**IN 1967,
I DIDN'T THINK
ABOUT IT.**

In the '60s, I was a woman of color who became part of a world, an industry, not of my making. I made my way as an actress and stunt woman, and had a vision of how I might help others. I didn't think about how my work for the NAACP Image Awards might influence generations. But it did. I also didn't think of where my life would end up. Now I'm grateful for a place where I belong, the Motion Picture Home.

Ann Veg

MPTF | 100
Caring is Infinite

Read more about Ann Veg's story and find out how you can help ensure the safety net for the entertainment industry for the next 100 years at [MPTF.com](https://www.mptf.com).

**IN 2011,
I DIDN'T THINK
ABOUT IT.**

My great-grandparents were Armenian Genocide survivors and I wanted to honor them in *The Promise*. When a close mentor offered the use of his office to kick off our movie he was saying: "I'm using the weight of my office to help you any way I can. This is what our community's all about." Being able to count on colleagues is immeasurable. We all rely on one another. That's why I support MPTF - it's an anchor for our community.

Eric Escartin

MPTF | 100
Caring is Infinite

MPTF exists through the generosity of others. In honor of our 100th year of service, please play a part in supporting our entertainment community. Read more about how we are the safety net for an industry and why it matters to you at [MPTF.com](https://www.mptf.com).

**IN 2004,
I DIDN'T THINK
ABOUT IT.**

TV can be full of ups and downs. But I've been fortunate to work with gracious people who want to help others. Paying it forward is important to me. You want to give back to those that may be hitting hard times. Life in this business can knock you on your butt, and MPTF is like that hand that comes out of nowhere: "Come on, get back on the horse. We got you."

Monica Meier

MPTF | 100
Caring is Infinite

MPTF exists through the generosity of others. In honor of our 100th year of service, please play a part in supporting our entertainment community. Read more about how we are the safety net for an industry and why it matters to you at [MPTF.com](https://www.mptf.com).

EVENTS



THE EVENING BEFORE attendees: Billy Porter, Regé-Jean Page, Cynthia Erivo, Bob Beitscher, Yvette Nicole Brown, Kathryn Hahn, Mj Rodriguez, Anya Taylor-Joy, and Even Peters.



THE NIGHT BEFORE host committee: Judith Light, Laverne Cox, Renée Zellweger, Rachel Brosnahan, Leslie Odom Jr., and Billy Porter.



HEARTBEAT OF HOLLYWOOD GOLF CLASSIC



VALENTINE'S CONCERT with Seth MacFarlane.

With the help of countless corporate sponsors, donors, and advocates, millions were raised at our fundraising events to support industry members and their families. In our 100th year, our industry took care of its own like no other in the world, and our fundraising events are a great example of how our community plays their parts for MPTF.

VALENTINE'S CONCERT WITH SETH MACFARLANE THE EVENING BEFORE

An intimate evening of songs benefiting MPTF and Bright Focus Foundation featured the Grammy-nominated vocalist Seth MacFarlane and his band performing beloved standards from the American songbook, live from his home.

Emmy[®] nominees and television industry leaders came together in person to celebrate and raise money for MPTF at the 15th annual Evening Before, with \$1.75 million raised to sustain the services MPTF offers to the entertainment industry. We thank all of our attendees.

THE NIGHT BEFORE

The 19th annual Night Before event brought together Academy Awards[®] nominees along with some of the biggest industry influencers in support of MPTF. The virtual event raised \$1.84 million, providing essential support for the safety net of services we have to offer.

DAY AT THE RANCH

The MPTF-IATSE fundraiser returned in person for a family picnic at Calamigos Ranch in Malibu featuring a lunch buffet, auction and raffle, and outdoor activities for the whole family. Funds raised enable MPTF to continue helping industry workers in times of need, including financial assistance, subsidized child care, and caring for aging parents.

HEARTBEAT OF HOLLYWOOD GOLF CLASSIC

Back in person, over 200 golfers came together on the links to celebrate the 43rd annual Heartbeat of Hollywood Golf Classic. Guests enjoyed a wonderful day of golf with proceeds helping purchase items needed by industry members living on the MPTF campus and those who live in the community.

FUNDRAISING GETS CREATIVE

During the second year of the pandemic, MPTF and our supporters came up with new ways to engage with our community to raise much-needed funding and awareness about our broad range of services.

- 1 On September 12, MPTF Board Members Channing Dungey and Tendo Nagenda hosted an intimate evening dinner raising funds in honor of our 100th anniversary.
- 2 MPTF's NextGen held a successful summer party also on September 12, hosted by Max Greenfield and featuring a live performance by Sam Nelson Harris of X Ambassadors.
- 3 An exclusive fundraising dinner at the home of celebrity chef Nancy Silverton was hosted by Billy Harris and Paul Vitagliano on November 7, featuring a special performance by Rita Wilson.
- 4 Kevin Goetz, author of the book *Audience-ology: How Moviegoers Shape the Films We Love* held a fundraising book launch evening at his home on December 5, hosted by Sherry Lansing, Peter Chernin, Hawk Koch, and Gary Lucchesi, and featuring a Q&A with Turner Classic Movies' Ben Mankiewicz. Attendees included Sharon Stone and Jim Gianopulos.





KATHY DAVIS
DEVELOPMENT
REPRESENTATIVE

JENNIFER JORGE, LCSW
DIRECTOR OF COMMUNITY
SOCIAL SERVICES

LEGACY OF GIVING

The support we receive helps keep our mission front and center. This is truly the backbone of MPTF and keeps sustaining us for 100 years and beyond.

TOTAL IN GIVING	\$28,119,449*
GIFTS	30,471
DONORS	7,083

*Includes \$922,266 Gifts in Kind.

CHAIRMAN'S CIRCLE

Academy of Motion Picture Arts & Sciences
Comcast NBCUniversal
Delta Air Lines, Inc.
Directors Guild of America, Inc.
Dolby Laboratories, Inc.
The Douglas Foundation
Ford Motor Company
Fox Entertainment
Google | YouTube
IATSE International
James and Deborah Burrows Foundation
Johnny Carson Foundation
Katie McGrath and J.J. Abrams Family Foundation
LIONSGATE
L'Oreal USA
MGM Studios
Netflix, Inc.
New Regency Productions, Inc.
NKSFB, LLC
Paramount
People Magazine
RealID
SAG-AFTRA Producers IACF
Sony Pictures Entertainment

Target
The Hollywood Reporter
The Samuel Goldwyn Foundation
The Semel Charitable Foundation
The Sumner M. Redstone Charitable Foundation
The Walt Disney Company
The Wasserman Foundation
Variety
WarnerMedia
Barry Diller
David Geffen
Gary and Susan Martin
Joe and Irene Roth
Karen Rosenfelt Blancato
Kate Capshaw and Steven Spielberg
Kathleen Kennedy and Frank Marshall
Marilyn and Jeffrey Katzenberg
Marilyn and John Wells
Mark R. Gordon
Patrick Soon-Shiong and Michele B. Chan
Roma Downey and Mark Burnett
Steven E. Tisch
The Gianopoulos Family
Todd Phillips

We acknowledge with gratitude donors who wish to remain anonymous. Chairman's Circle members are donors who have made contributions totaling \$1M or more over the past ten years.

OUR SUPPORTERS

CORPORATE & FOUNDATIONS

MPTF's programs and services would not be possible without the annual support of these corporations and foundations who give generously.

\$500,000+

Comcast NBCUniversal
The Samuel Goldwyn Foundation
The Sumner M. Redstone Charitable Foundation
Target
The Walt Disney Company
The Wasserman Foundation

\$500,000 - \$250,000

Academy of Motion Picture Arts & Sciences
Apple
Directors Guild of America, Inc.
Douglas Foundation & Kirk and Anne Douglas
G-Unit Film & Television, Inc.
The John & Marilyn Wells Family Foundation
Netflix, Inc.
Penske Media Corporation
SAG-AFTRA Producers IACF
The Milchan Family

\$250,000 - \$100,000

Delta Air Lines, Inc.
Hollywood Foreign Press Association
James and Deborah Burrows Foundation
Katie McGrath and J.J. Abrams Family Foundation
NKSFB, LLC
WarnerMedia

\$100,000 - \$50,000

Amazon Studios
Anthem, Inc.
Century Park
Edward F. Limato Foundation
eOne
IATSE International
Johnny Carson Foundation
Los Angeles Times
MGM Studios
Motion Picture Association
Paramount
Paramount Pictures
People Magazine
Salem Partners Wealth Management
Sony Pictures Entertainment
Village Roadshow Pictures Entertainment Group

\$50,000 - \$25,000

A + E Networks
Affiliated Property Craftspersons, IATSE Local 44
Amblin Partners
AMC Theatres
Bridgewater Associates, L.P.
Del Shaw Moonves Tanaka Finkelstein Lezcano
Bobb & Dang
Delta Dental

Entertainment Studios

The Fran & Ray Stark Foundation
Google | YouTube
Hulu
International Cinematographers Guild,
IATSE Local 600
The John & Jordan Davis Foundation
L'Oréal USA
Legendary Entertainment
Lighting Technicians, IATSE Local 728
Maker's Mark
Motion Picture Editors Guild, IATSE Local 700
Participant Media
Production Resource Group
Providence Health & Services Foundation
SAG-AFTRA Foundation
UTA

\$25,000 - \$10,000

Accessories Council
Advanced Research Investment Solutions
The Animation Guild, IATSE Local 839
Art Directors Guild, IATSE Local 800
CADILLAC
The Charles V. Roven Family Foundation
Cheiron, Inc.
The Chuck Lorre Family Foundation
City National Bank, an RBC Company
CVS Health
Fleischer Studios - Susan and Mark Fleischer,
Stanley Handman, Virginia Mahoney
Four Seasons Resort Maui
FOX Entertainment
Hollywood Teamsters Local 399
Illumination Entertainment
LIUNA! Local 724 Studio Utility Employees
Make-Up Artists & Hairstylists Guild, IATSE Local 706
Marcum Entertainment Corp
Mattel, Inc.
The MBS Group
Miller Kaplan Arase LLP
Montage Los Cabos
Motion Picture Costumers, IATSE Local 705
Motion Picture Licensing Corporation
Motion Picture Mothers, Inc.
Motion Picture Set Painters & Sign Writers,
IATSE Local 729
Motion Picture Studio Grips, Crafts Service, Set
Medics, Marine Department and Warehouse
Workers, IATSE Local 80
Nickelodeon
Production Sound Technicians, Television
Engineers, Video Assist Technicians and Studio
Projectionists, IATSE Local 695
Rael & Letson
Reel Health LLC
The Richard F. Walsh/Alfred W. Di Tolla/Harold

P. Spivak Foundation

Rosenthal Family Foundation
Script Supervisors/Continuity, Coordinators,
Accountants & Allied Production Specialists
Guild, IATSE Local 871
The Segal Group
Southern California District Council of Laborers
Stein Eriksen Residences
U.S. Bank Institutional Trust & Custody
UCLA Health
Union Bank
UnitedHealthCare
Vanity Fair
Venable Foundation, Inc.
VSP Vision Care
W. M. Keck Foundation
Walter Parkes & Laurie MacDonald Charitable
Foundation
Warner Bros. Discovery

\$10,000 - \$5,000

Bel Air Investment Advisors, LLC
Bergen Foundation
Boyd Watterson Asset Management
Bush Gottlieb, A Law Corporation
Chivaroli & Associates Insurance Services
Cinema Audio Society
Costume Designers Guild, IATSE Local 892
Dell, Inc.
Dorskind Family Foundation, Inc.
Drop Shop Digital
EditShare
First Entertainment Credit Union
The Hollywood Reporter
Intercontinental Real Estate Corporation
J.P. Morgan Asset Management
James D. Scheinfeld Family Foundation
JLL
K & Y Investments
Kanter Family Foundation
Lazard Asset Management
Lear Family Foundation
McMorgan & Company
Moonshot Entertainment, Inc.
Morrison Community Living
The Northern Trust Company
Savitsky Satin Bacon & Bucci
Screen Engine/ASI
ScreenCraft
Ullico

\$5,000 - \$2,500

AFL - CIO Building Investment Trust
Art Directors Guild Set Designers & Model
Makers Council
Baccarat Hotel New York
BNY Mellon Investment Management
CESD Talent Agency



JOAN SANCHEZ
DIRECTOR, BEHAVIORAL HEALTH

DoubleLine Capital
Entertainment Partners
Fiduciary Trust International of California
Ford & Wallach
Four Seasons Resort Orlando at Walt Disney
World® Resort
Grand Wailea Maui
Jack Schwartzman Family Foundation
Luther Burbank Savings
Meketa Investment Group
Optum
T Mobile
The Comedy Store
Wohlner Kaplon Cutler Halford & Rosenfeld

\$2,500 - \$1,000

Blue Shield of California
Costume Rentals Corporation
Crescent Capital Group LP
Deluxe Entertainment
Gordon Edelstein Krepack Grant Felton &
Goldstein LLP
The Horn Foundation
Innovative Artists
International Brotherhood of Electrical
Workers, Local 40
It Takes Our Village
Jamie Rosenthal Wolf, Rick Rosenthal, Nancy
Stephens, & The Rosenthal Family Foundation
Keenan Healthcare
Laborer's International Union of North America,
Local 300
Lewis Greenwood Foundation
LiteGear Inc.
Liuna Pacific Southwest
The Mary Pickford Foundation
Teladoc Health
The Thursday Golf Group
Theatrical & TV Stage Employees, IATSE Local 33
United Business Bank
Wasatch Advisors
Washington Capital Management, Inc.
The Weintraub Family Foundation
Western Costume Company
Wonderful Giving

ANNUAL GIVING

\$500,000 - \$250,000

Caitlin and Kevin Feige
Steven E. Tisch

\$250,000 - \$100,000

Berlanti Family Foundation
Roma Downey and Mark Burnett
Clint Eastwood
The Gianopulos Family
Mark R. Gordon
Rita Wilson and Tom Hanks
Kathleen Kennedy and Frank Marshall
Susan and Gary Martin
A. Scott Berg and Kevin T. McCormick
Karen Rosenfelt Blancato
Mickey and Lee Segal
Kate Capshaw and Steven Spielberg

\$100,000 - \$50,000

Joseph D'Amore
Michael and Jacky Ferro
The Pine Family

\$50,000 - \$25,000

Byron Allen
Betsy Beers and Bruce Cormicle
Carol and Bob Beitcher

Tom Bergeron
Richie Egan
Michael D. Karlin
Sherry Lansing
Francine Markow
Ronald M. Meyer
Tendo Nagenda
John Ptak and Margaret Black
Joe and Irene Roth
Karen Keehne Zimmerman and Thomas A.
Zimmerman

\$25,000 - \$10,000

The Apatow-Mann Family Foundation
Susannah Blinkoff and Jordan Corngold
Jeff and Susan Bridges
Kevin and Claudia Bright
Jerry and Linda Bruckheimer
Lois C. Chiles
Sandy Cilman
George and Amal Clooney
Charles S. Cohen
Michael De Luca
Don P. Desmond
Channing Dungey
Toby Emmerich
Stacey and Tim Farish
Dan and Brynne Fellman
Edie and Joe Fischer
Mark and Susan Fleischer
Shari and Robert Friedman
Seth Grahame-Smith
Mikey and Jay Hoag
Cindy Holland and Annie Imhoff
Ron and Cheryl Howard
David and Stellina Katzenberg
Molly and Hawk Koch
Jessie Kornberg
Thomas and Travis Kranz
Bradley and Susie Krevoy
Gail and Warren Lieberfarb
Ray and Florence Littlefield
Lynne Lucas
Anne and Bob Miller
Lisa M. Pierozzi
Carolyn and Bob Pisano
Patrick and Simone Purcell
Marion and Diane Rothman
Steve and Jenny Savitsky
Mike Schur and Jennifer Philbin
Nina L. Shaw
Sharon Stone
Scott Stuber and Molly Sims
Courtenay Valenti and Pat Roberts
Karen Vock and John Scheinfeld
Chandra Wilson

\$10,000 - \$5,000

Bonnie Arnold
Curt and Anna Behlmer
Julie and Scott Bobbitt
Sandy Bollinger
Michael Braun
Allen Burry
Barb Centrella
Jodie Foster
Elizabeth and Lee Gabler
Ted Gagliano
Sid Ganis and Nancy Hult Ganis
Anne and Brad Globe
Kevin and Neil Goetz
Jeff and Wendy Goldstein
Carol and William Gordean
Pattikay and Meyer Gottlieb
Mary Hardwick
Robert Hohman Trust

Bill and Kim Jordan
Jim Keaton
Pat Lau
Mary S. Ledding
Nicholas Mars
Lawrence A. Mirisch
Greg Nadal
Jack Nicholson
Julie and Marc Platt
Beth Deutschman Rabishaw and Gary Rabishaw
Tim and Tracy Sarnoff
Lisa Lillien and Daniel Schneider
Janette Shugart
Barbara Shuler
Steve Starkey and Olivia Erschen
Krista Vernoff

\$5,000 - \$2,500

Cate Adams
E.C. Prop Rentals, Inc.
David and Audrey Asplund
Amy Bookman
Petula Brown
Melissa Cobb
Geoffrey Colo
Viola Davis and Julius Tennon
Robert A. Del Valle, Jr.
Matt Dentler
dooner
Jeffrey R. Epstein
Peter Fornstam
Lucy Butler and Gregory Geifan
Jason George
Elyse and Harvey Gettleson
Lee Grubin
Fabienne Guerin
Walter Hayato Hamada
Bob and Ronda Harvey
Rebecca L. Huntley
Mary and Len Iannelli
Francine Patricia Jamison
Leslie and David Kimball
Bruce Knechtges
Audrey Davis Levin and Peter Levin
Joe Matza
Lawrence Steven Meyers
David and Andrea Nevins
Diane Cary and James Parriott
Helen T. Richman
Stephanie Romanov
Rabbi Arthur and Catherine Rosenberg
Alexis Rappaport and Michael S. Royce
Ginna and George Schenck
Christopher P. Sheridan
Stacey Snider and Gary Jones
Guy Tardif
Julia Teraceno
Betty Thomas
Ann Thornberg
Michael T. Tidik
Stephanie and Doug Waite
Lori Weintraub
Ellie and Tom Wertheimer

\$2,500 - \$1,000

Thomas Ackerley
Maggie Adams
Linda Allen and Madeline Wollmer
In Memory of Norman Alden
Esther and Joseph Aredas, Sr.
David R. Augsburg
Simran Baldwan
Eileen M. Baker
Mary Elin Barrett
Eric and Kimberly Belcher
John and Cary Berkley

Scott Bernard
William D. Bernstein
Matthew and Cassie Biederman
Bruce and Renne Bilson
Gil Birmingham
David Blaire
Peter and Lisa Block
Robin Borman
Yvette Bowser
Jeffrey J. Bradley
Marcia Braunstein
Krysten and Walter Brennan
Adrien Brody
Chip and Marilyn Brooks
Yvonne Corbell and Ira Byock
Sue Cabral-Ebert
Matt Callahan
Jerry and Laura Callaway
Robert and Royola Calvert
David and Deanna Campbell
Steven H. Casman
Susan and Chang Chae
Tedd Cittadine
Lynne Marie Coakley-Steele
Dan Cohen
Nicholas Copus
Jackie D. Counter
Grey Damon
Eric Darbeloff
Jon F. Davison
Patrick DeCarolis and Cathleen Young
Philip Decker
David and Jan Demont
Susan and Jonathan Dolgen
Lauren Donner
Nora Doyle and Peter Gould
Thomas A. Duffield, Jr.
Katy and Brian Duffy
Maddy Dychtwald
Brian Eaton
Michael and Teri Elias
Bill and Susie Ewing
Howard and Myrna Fabrick
Mike Farah
David Fickas
Sara Fischer
Kate Flannery
Robert Alan Foulkes
J.D. Funari
Serge Genitempo
Diana Dreiman and Stephen Gilula
Conrad M. Gonzalez
Dwayne O. Grady
Craig Greiwe
Fred W. Griggs
Sandey Grinn
Laurie E. Groh
Don Halcombe
Tim Hall
Bonnie Hammer
Ned Haspel
Susan J. Hayes
Shahram Hazany
Linda and Steven Healy
Andrea and Ron Hein
Allan Heinberg
Rusty Hendrickson
Thomas Hershey
Michael Hissrich
Howard B. Hodges
Russ Hollander
William and Denice Hoy
Flora Huang
Karyn Isaacs
Andrea Breslin-Jaffe and Toby Jaffe
Elton and Ashley James

Joanna Jankowsky
David Jarrell
David J. Jefferson
Martha Johnston
Richard Kahn
Scott Kaiser, MD
James Keach
Justin Kirk
Dawn R. Knepley
Shawna Kornberg Wexler and Micah Wexler
Sue J. Kroll
Michael H. Kuehl
Richard Lagravenous
Jackie Joseph Lawrence and David Lawrence
Lynne Littman
Matthew D. Loeb
Frania and Alex LoVerde
Gentry and Marjorie Lovett
Liz Lucas
James Lundin
Steve and Dodie Magglo
Joseph A. Maltz
Marvin and Rita March
Sharon and Richard Marcus
Lisa B. Margolis
Peter P. Marley
Jan Martens
Dick and Julie May
Kelly J. McCreary
Lori McCreary
Robert R. Meisner
Jeff Melvojn
David H. Menteer
Michael R. Mertens
Burton D. Metcalfe
Michael G. Michaud
Alyssa Milano
Jeffrey S. Miller
Michael F. Miller
Walter M. Mirisch
Leslie Morgenstein
Thaine R. Morris
Anne Mosell
Missy Muldoon
Therese Munster
Deen Mutch
Heidi J. Nakamura
Stephen Nathan
Daniele Nathanson
Richard Nelson
Alfred S. Newman
Nate Newman
Randal O'Connor
Henry P. Olek
Michael W. O'Neill
Gregg Oppenheimer
Leonicio F. Ortiz-Gil
Robert M. Osher
Angelo A. Palazzo
Susan M. Palladino
Brett Paul
Christopher Pawlak
Rodd Perry
Julie Petri
Katherine W. Pickering
Mark Pinkerton
John M. Poer
Darryl Ponicsan
Steven B. Poster
Stephen Prime
Chance Quinn
Antonio Rael
Lee Ramer
James Ramo
Irene C. Ramp
Curtis W. Randoll

Daniel Rappaport
Ron Rauch
Mark R. Reilly
Carla Renata
Catherine A. Repola
Joyce Rey
Peter J. Rice
Deborah Rogosin
Edward A. Romano
Jane Rosch
Lee E. Rosenthal
Jay D. Roth
Frank L. Ruger
Nina Ruscio
Paul Sabella
Ronald Sampson
Arlene Sanford
Ann M. Saroff
Alizia Schragger
Edwin B. Self
Lily Semel
John P. Sgueglia
Risa Shapiro
Angela Shaw
Melody M. Sherwood
Arnold Shupack
Sharon A. Siefert
Mary Singer
James D. Smith
William J. Smith
John F. Soukup
James H. Spencer
Brent Spiner
Steven S. Spira
Nick St. Angelo
Marilyn L. Stewart
Jill A. Stirdivant
Catherine A. Strohmaier
David A. Swope
Cathleen Taff
Rita Taggart
Elizabeth Tanzil
Peter Taylor
Lydia Telo
Rachel G. Tenner
Barry K. Thomas
Alan L. Tivoli
Ron Trost
Evelyn M. Truitt
G. B. Unger
Shelby Valencia
Michael J. Vasquez
Robert V. Villar
Kathy Virkler
Heiko von Drenenberg
Lynne Wasserman
Michaela Watkins
James B. Watters
Gretchen A. Wayne
Teresa A. Wayne
Darren R. Webb
Nick Wechsler
Don J. Weiner
Mark H. Weingartner
Ryan G. Welsch
Jay Weston
Halory C. Williams
John and Samantha Williams
Karen Wong
Jan and Edward Woods
Joyce and Ken Worley
Melissa Wylie

We acknowledge with gratitude donors who wish to remain anonymous.

We acknowledge with gratitude donors who wish to remain anonymous.

PLANNED GIVING

ESTATES, NEXTGEN, AND PAN

Thank you to all those who leave a gift to MPTF in their estate planning. We help pay it forward in your honor and value the entertainment community's spirit of family.

Ian Abercrombie Estate
Olga H. Altman Estate
Brenda L. Banks Estate
Sally Benson Estate
Letha M. Prince Bixler Estate
Robert S. Blee's Estate
Margaret Booth Estate
Curtis F. Curt Bourland Estate
Nancy R. Boyer Estate
Lucille M. Stofer Burdick Estate
Raull Butcher Estate
Robert Carson Estate
David M. Castro Estate
Kurt Conner Estate
Alan Crosland Estate
Dorothy Dodie Demme Estate
Richard Donner Estate
John Drake Estate
Marion Dugan Estate
James Fairall Estate
Maureen K. Farley Estate
Charles K. Feldman Estate
Ruth Brooks Flippen Estate
Adele N. Freulich Estate
Michael Gannon Estate
Beverly Garland Estate
Myrna C. Gibbs Estate

Robert Bruce Gray, Sr. Estate
Ann Guilbert Estate
Edmund Hall Estate
Peter F. Hansen Estate
Edith Head Estate
William Holden Estate
Frank Howard Estate
Tony Ip Estate
Mary Jackson Estate
Christine Jorgensen Estate
Phothivongsa Kabkeo Estate
Leonard Kaufman Estate
DeForest Kelley Estate
Jonna L. Kowsky Estate
Rodney L. Langham Estate
Michael Lemaster Estate
Dona Holloway Lichtenfield Estate
Jon Lorner Estate
Curt Lowens Estate
Joseph Marquette, Jr. Estate
Darren McGavin Estate
Ralph and JoAnn Mikkelsen Estate
Larry L. Newman Estate
Donald Nicholl Estate
Gladys E. "Gee" Nicholl Estate
Jaime Onate Estate
John M. Orlando Estate

David L. Perna Estate
Charles R. Pierce Estate
Marguerite J. Ray Estate
Stanley Roberts Estate
Robert Roddy Estate
John L. Root Estate
Larry Ropa Estate
Ralph Sandler Estate
Kenneth Sargeant Estate
Charles A. and Ruth G. Satchell Estate
Walter Seltzer Estate
Anne Seymour Estate
George Sherman Estate
Dee Culhan Somers Estate
Leonard Spigelgass Estate
Jack Starkey Estate
Max Steiner Estate
Leonette B. Steiner Estate
Gil Stratton Estate
Fredrick A. Townsend Estate
John C. Tuell Estate
Curtis G. Weidler Estate
Mary L. Whiteley Estate
Michael A. Wills Estate
Joseph Wolfe, Jr. Estate

NextGen is a diverse group of entertainment industry professionals who represent the many aspects of film and television in Hollywood and support MPTF's mission of taking care of our own.

BOARD OF DIRECTORS
Cate Adams
Simran Baidwan
Yvette Nicole Brown
Geoffrey Colo
Jeffrey Epstein

Jason George
Michelle Homerin
Andrew Honsey
Flora Huang
Julian Jacobs
Jelani Johnson

Monica Macer
Lyndsey Miller
Anna Musky-Goldwyn
Allison Smartt
Brian Toombs
Elyse Weissman

MPTF's Professional Advisory Network (PAN) is a dynamic group of attorneys, business managers, CPAs, financial planners, and wealth managers with clients in the entertainment and sports industry.

BOARD MEMBERS
Chang Chae
Shahram Hazany

Tyson Beem
Jonathan Fitzgarrald
Jeffrey Gerber

*We acknowledge with gratitude donors who wish to remain anonymous.



LOUIE ANCHONDO
DIRECTOR OF DEVELOPMENT



Use the code to see more.

COURTENEY BAILEY
CHIEF DEVELOPMENT OFFICER

TOGETHER WE OVERCOME

As we reflect on 2021, I'm constantly reminded of how lucky we truly are despite all the challenges, hardships, and complexities that persisted again in this post-COVID-19 world. MPTF celebrated its 100th anniversary, and while we could not gather in person around this historic moment, it gave us all the opportunity to reflect on the past and define a vision for the future.

We again saw our essential workers and everyday heroes tirelessly field thousands of requests for help, provide love and care to our most vulnerable members of the community, and support each other with kindness and grace.

And not only did the community call on MPTF for help, but we called on them as well and the response was beautiful. We asked many people to support us financially, to give their time as volunteers, to bring their leadership and energy to our Boards, and to advocate on our behalf.

Our fundraising efforts were again impeded by COVID-19 restrictions, but again creativity found a way and our staff did not waiver in their determination to effect change and raise support.

We want to thank you: you the community who believe in us, who make up the fibers of this 100-year-old safety net; you who come together in this special, unique, and very hard industry to bring joy to the world. Thank you for taking care of each other and for understanding that your success is built upon the shoulders of so many. Thank you for being the change you want to see.

I'm constantly reminded of our 100th anniversary PSA campaign centered around life's "I didn't think about it" moments, and I'm confident we can handle anything that comes our way. It truly is a blessing to be a part of such a tremendous community, and while we have much work to do, we will approach every day with confidence and gratitude.

As our CEO mentioned in his letter at the start of this report, MPTF is absolutely critical to our industry, and we simply could not exist without people like you who lift us up with your support and love.

Courteney Bailey
Chief Development Officer



MPTF | Motion Picture & Television Fund
23388 Mulholland Drive
Woodland Hills, CA 91364
Toll-free | 855.760.MPTF (6783)

Email us at info@mptf.com

Donor Relations | 818.876.1977
Social Services | 323.634.3888
Palliative Care | 818.876.1739
Volunteering | 818.876.1915

mptf.com

